

A large, light blue, multi-lobed circular graphic with a white center, resembling a stylized sun or a flower, set against a dark blue background. The graphic is centered and contains the UCI logo and tagline.

UCI

**Bright Past.
Brilliant Future.**

Undergraduate Trends and Challenges at UCI

February 14, 2017

Overview of Presentation

- Our undergraduate student demographic changes in recent years
 - Campus trends over time
 - UCI compared with peer institutions
- Major things to be *PROUD* about!
 - But also, areas where we can improve and focus some attention.
- Applicant, Admit, and Enrollment characteristics by various measures
- Where admitted students go, if not to UCI

Office of Institutional Research

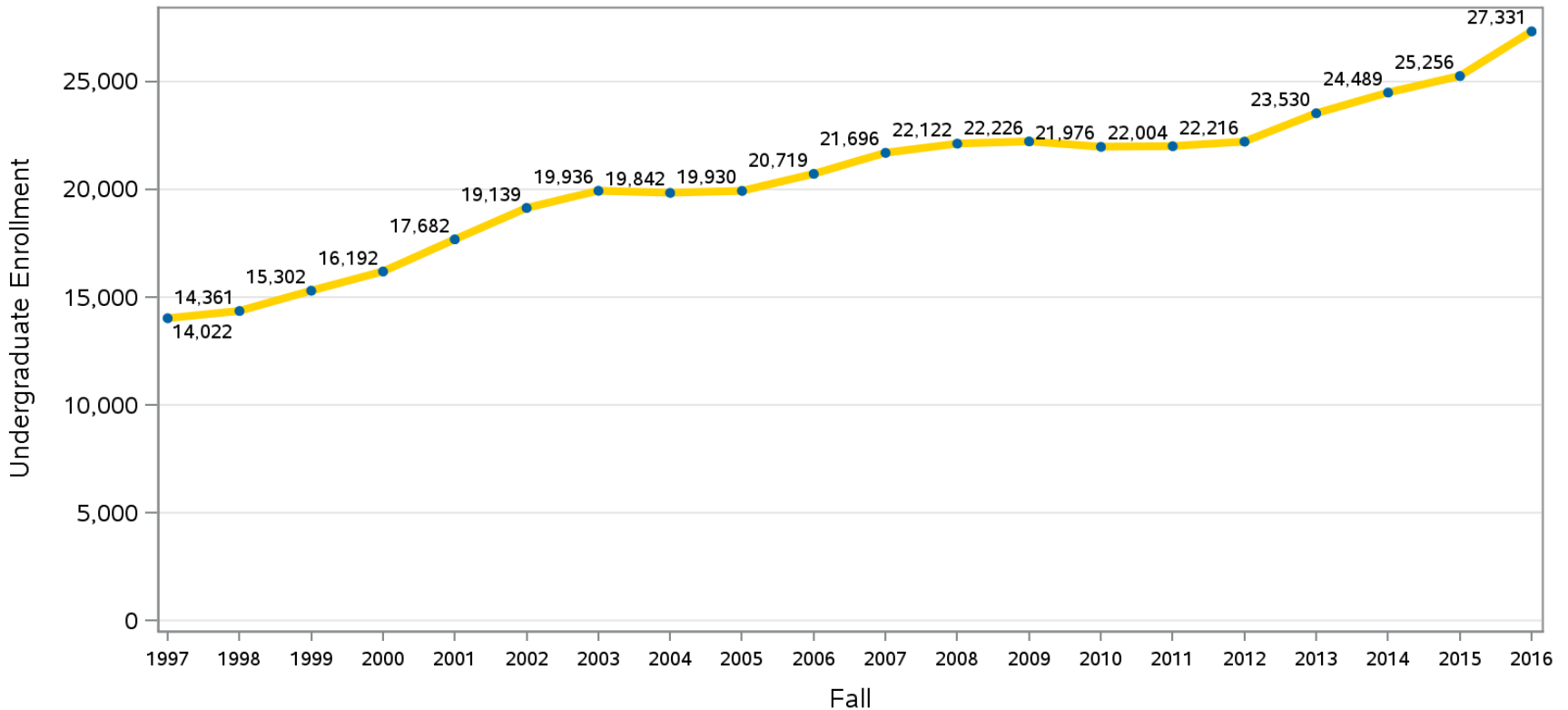
Who we are

We perform research, analysis, and reporting that supports campus academic planning, strategic decision-making, enrollment management, and program assessment. Our office collects, analyzes, and interprets a wide variety of data about UC Irvine and its external environment for the purposes of assessing institutional outcomes, measuring institutional performance against strategic planning goals, comparative analysis with peer institutions, and reporting to campus constituencies and external agencies. Our office reports to the Vice Chancellor–Planning and Budget.

<http://www.oir.uci.edu>

As we all know, this year we had the most enrolled undergraduates ever...

Undergraduate 20 Year Enrollment Trends
Fall 1997 to Fall 2016

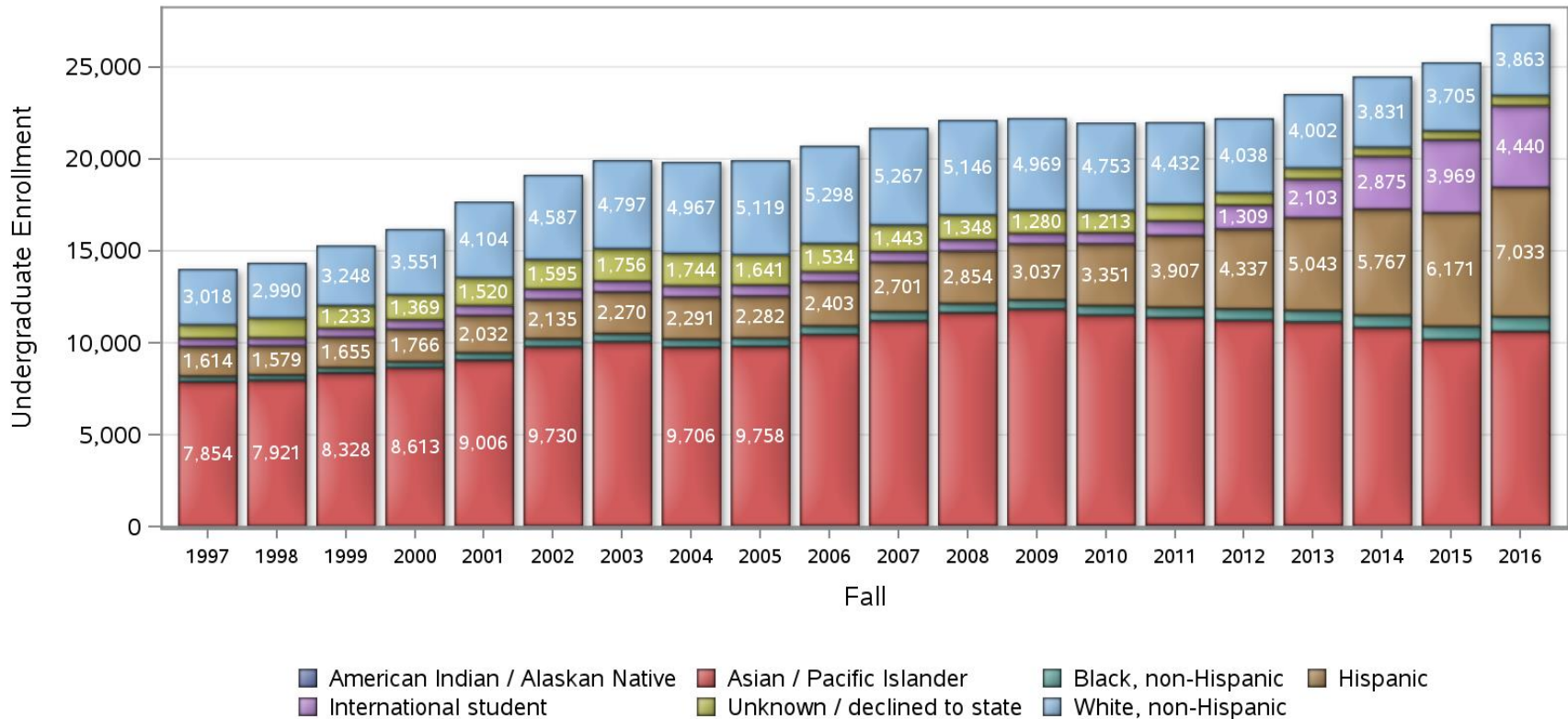


Source: OIR's tbl3rdWeekStudents, various years; queried on 02/13/17.

UC Irvine
Office of Institutional Research

But what is also surprising is the rapid change in our student characteristics...

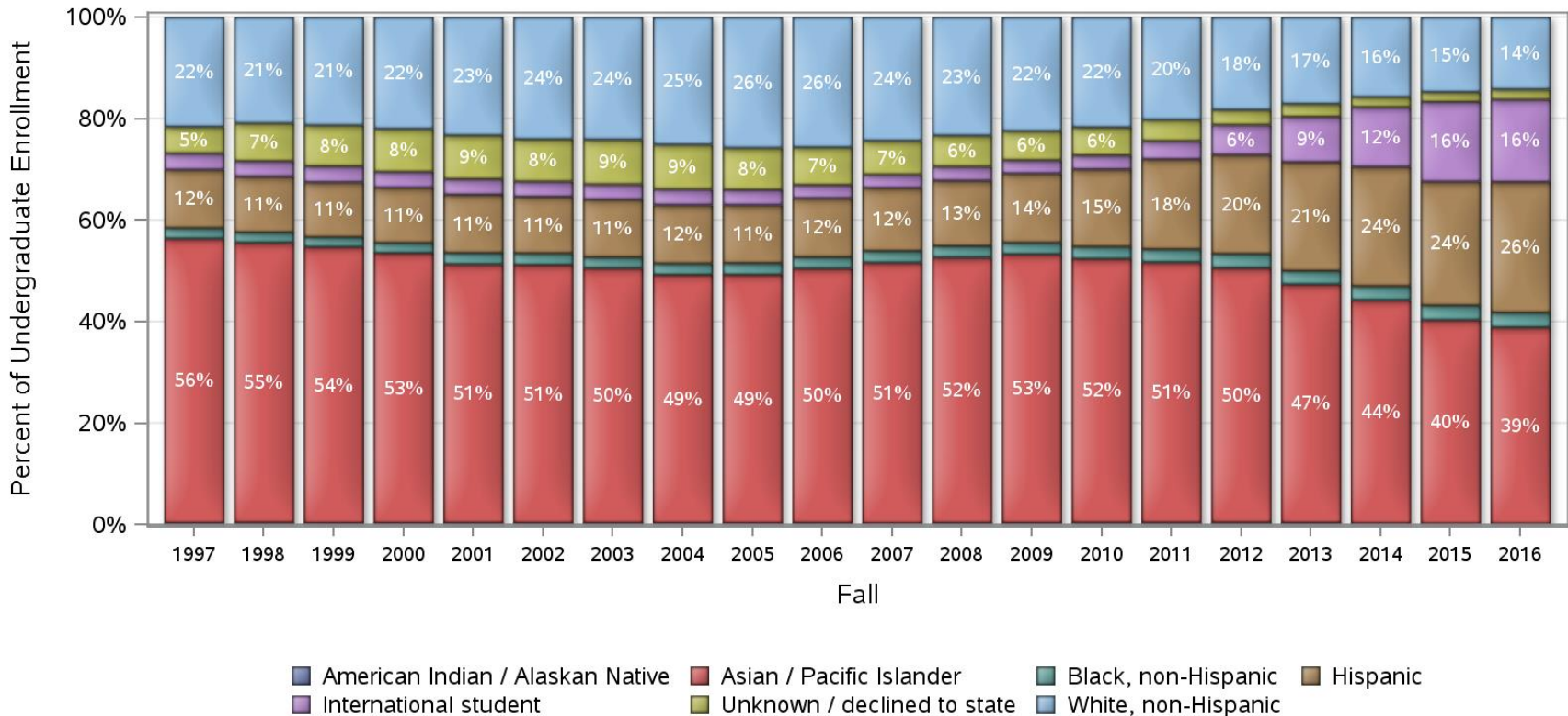
Undergraduate Enrollment by Ethnicity
Fall 1997 to Fall 2016



Source: OIR's tbl3rdWeekStudents, various years; queried on 02/13/17.

Better seen as percentages of our total undergraduate enrollment...

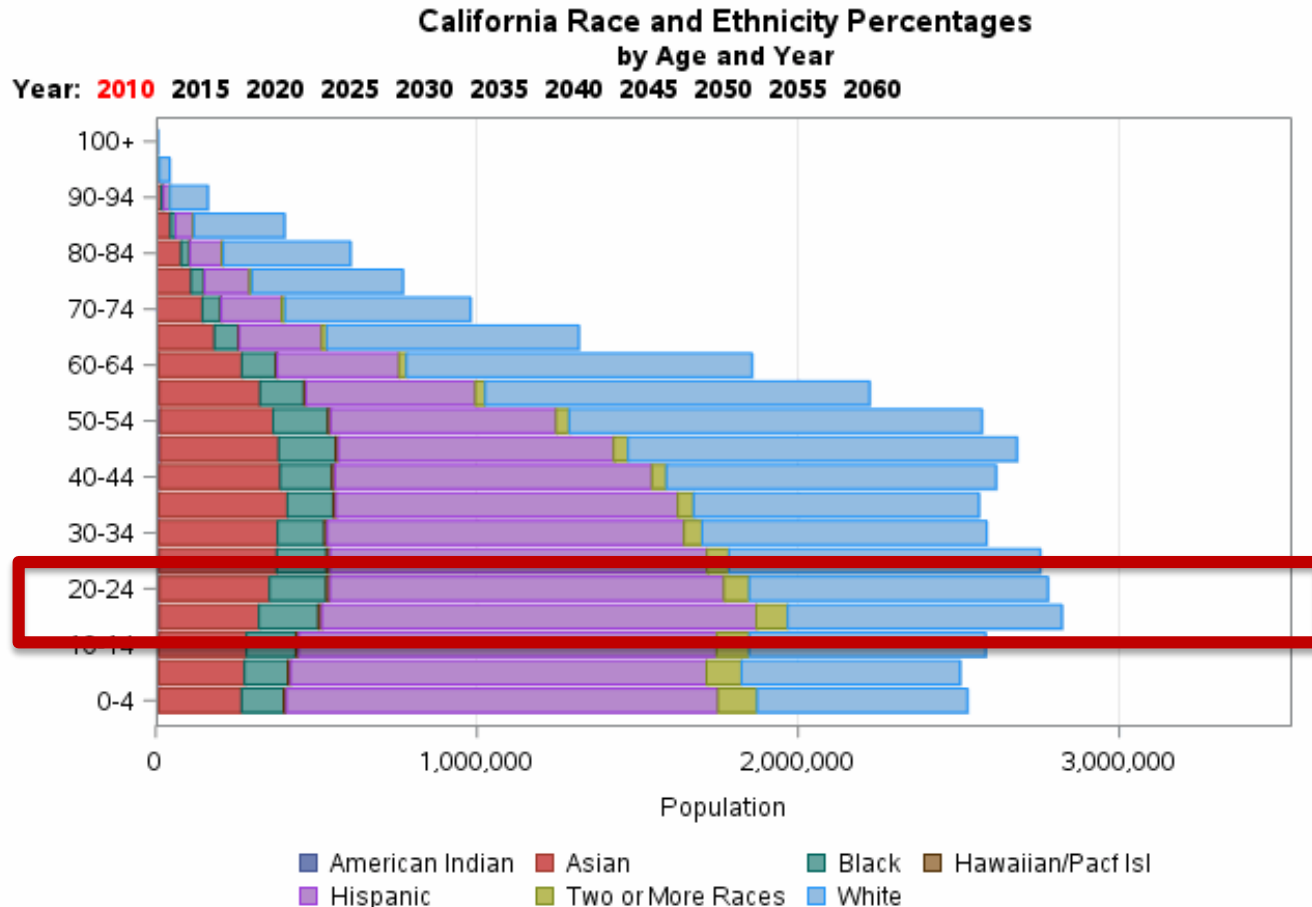
Undergraduate Enrollment by Ethnicity
Fall 1997 to Fall 2016



Source: OIR's tbl3rdWeekStudents, various years; queried on 02/13/17.

UC Irvine
Office of Institutional Research

And we can expect continued growth in our Hispanic enrollments in particular...

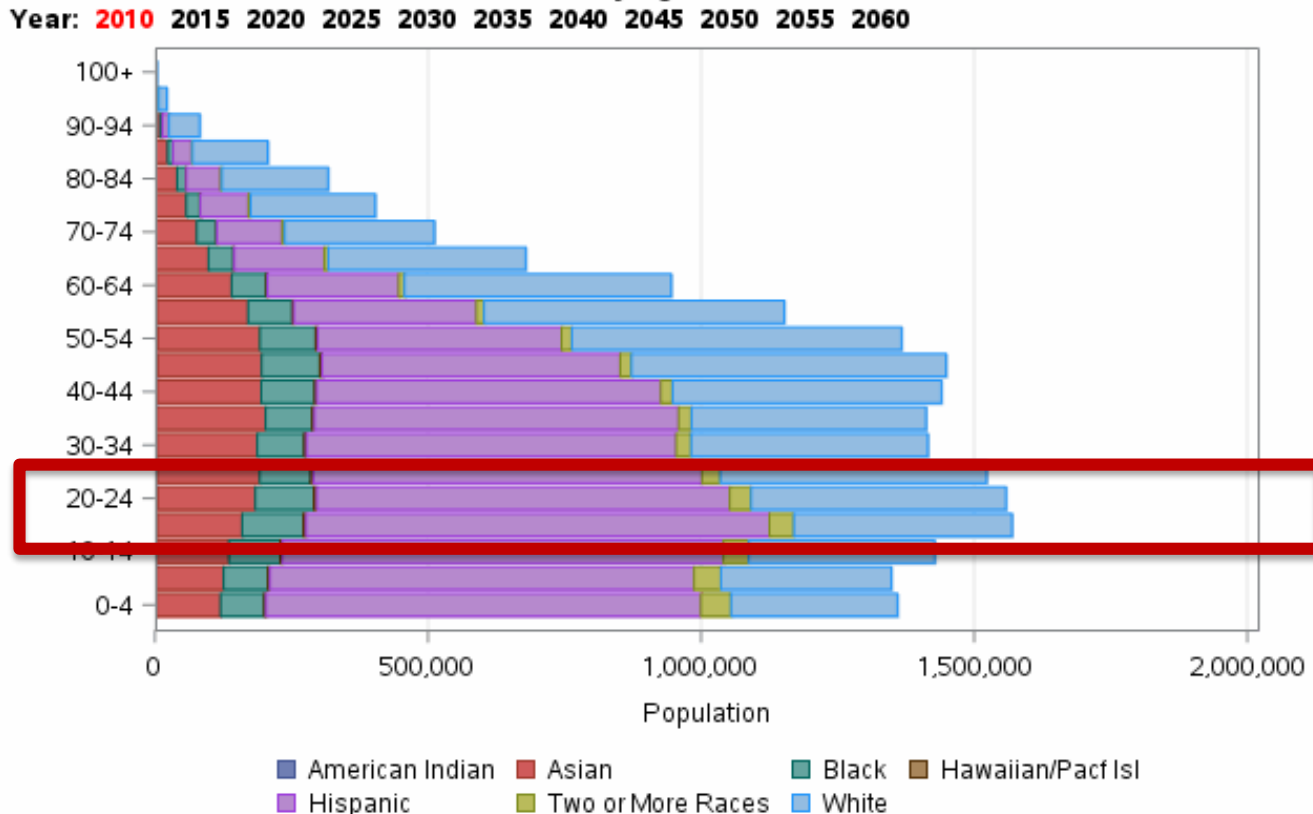


Source: California State Department of Finance, 12/15/14.

<http://www.dof.ca.gov/research/demographic/data/proj/P-3/>

Especially given our local top 5 feeder counties...

**Race and Ethnicity Percentages for the Top 5 feeder Counties
Orange, Los Angeles, Riverside, San Bernardino, and San Diego
by Age and Year**



Source: California State Department of Finance, 12/15/14.

<http://www.dof.ca.gov/research/demographic/data/proj/P-3/>

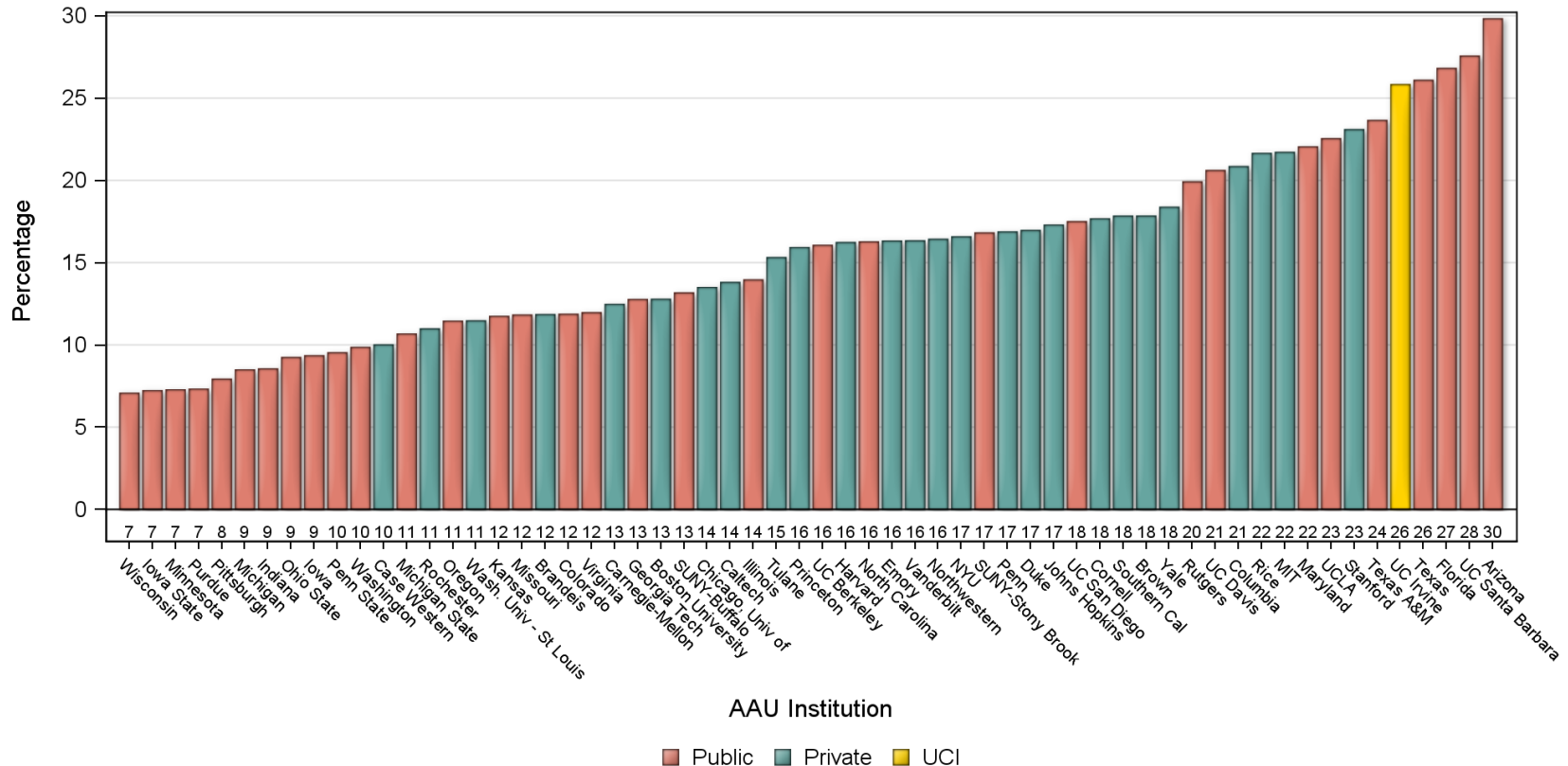
What do these demographic changes mean?

- How will we differ from our AAU peers?
- What will be our challenges?



Using the most recently available data, UCI is in the top 5 of AAUs in terms of Under-represented minority enrollments

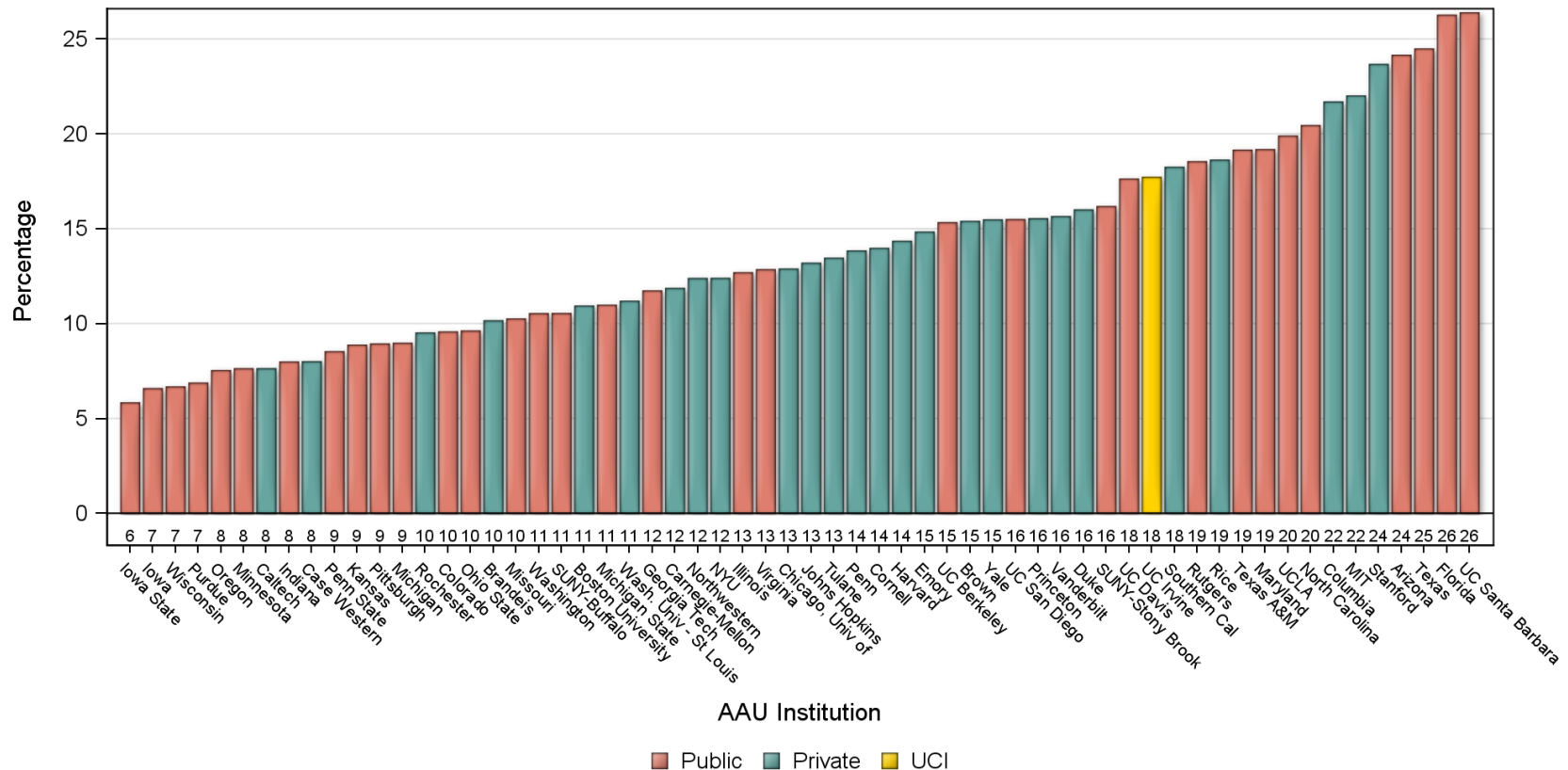
Under-represented Minority Undergraduate Enrollments
as a Percentage of Undergraduate Total Enrollments at AAU Institutions
Academic Year: 2014-2015



Source: IPEDS Fall Enrollment data, AAUDE Data Warehouse queried on 02/13/17.

Which is a significant change for us from just five years before, when we were about 15th ...

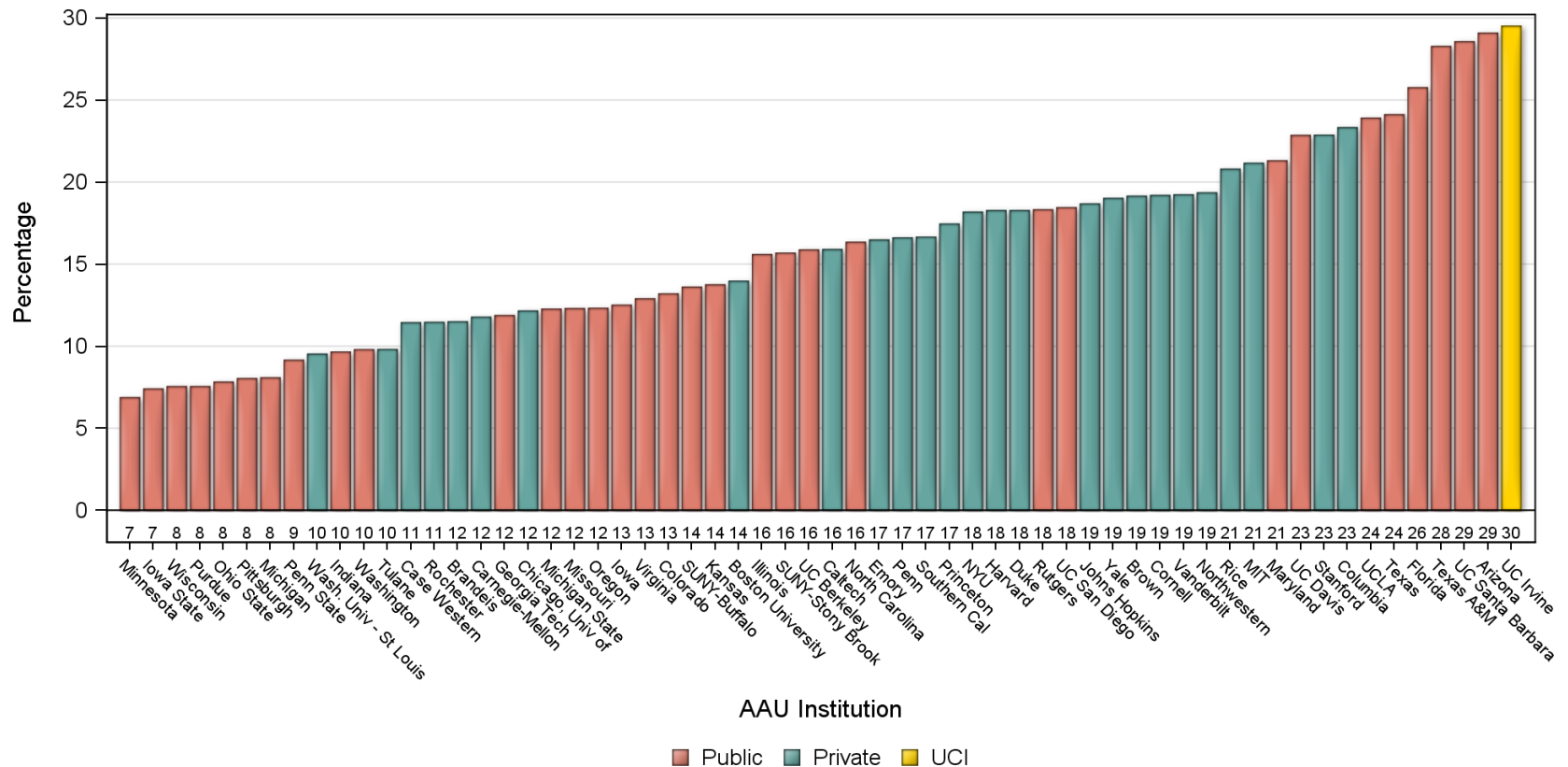
Under-represented Minority Undergraduate Enrollments
as a Percentage of Undergraduate Total Enrollments at AAU Institutions
Academic Year: 2010-2011



Source: IPEDS Fall Enrollment data, AAUDE Data Warehouse queried on 02/13/17.

And as we look to the future, UCI has the highest % of Under-represented New Freshman among AAUs

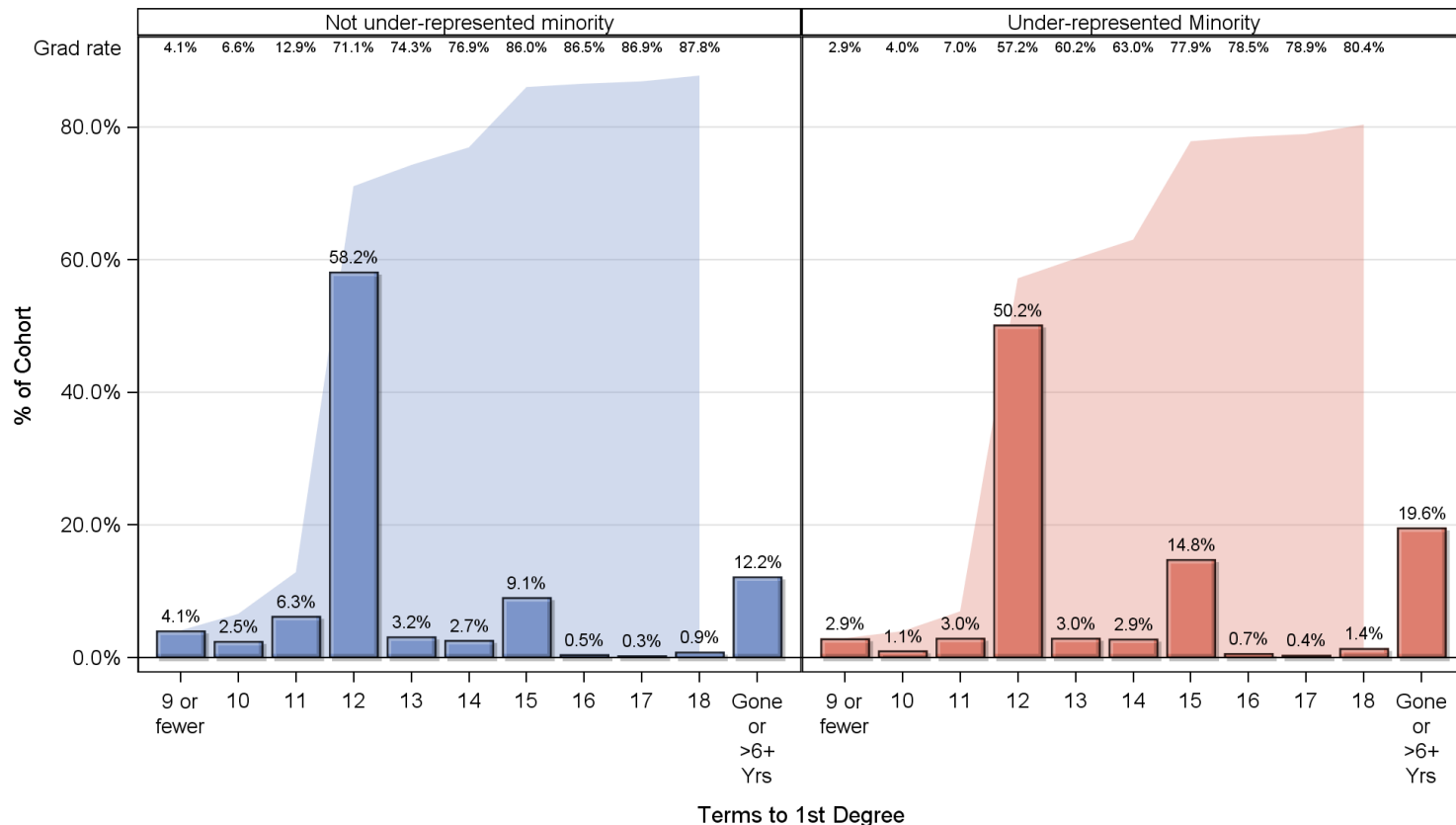
Under-represented Minority First-time, Full-time Freshman Enrollments
as a Percentage of Total First-time, Full-time Freshman Enrollments at AAU Institutions
Academic Year: 2014-2015



Source: IPEDS Fall Enrollment data-Student Type: Full-time, first-time, first-year, degree-seeking undergraduates, AAUDE Data Warehouse queried on 02/13/17.

What might this mean? Well, there are Achievement gaps for under-represented minority students with various student success measures

Distribution of Terms-to-Degree by Under-represented Minority Status
 5 Years of New Freshman Cohorts
 from 2006-07 to 2010-11

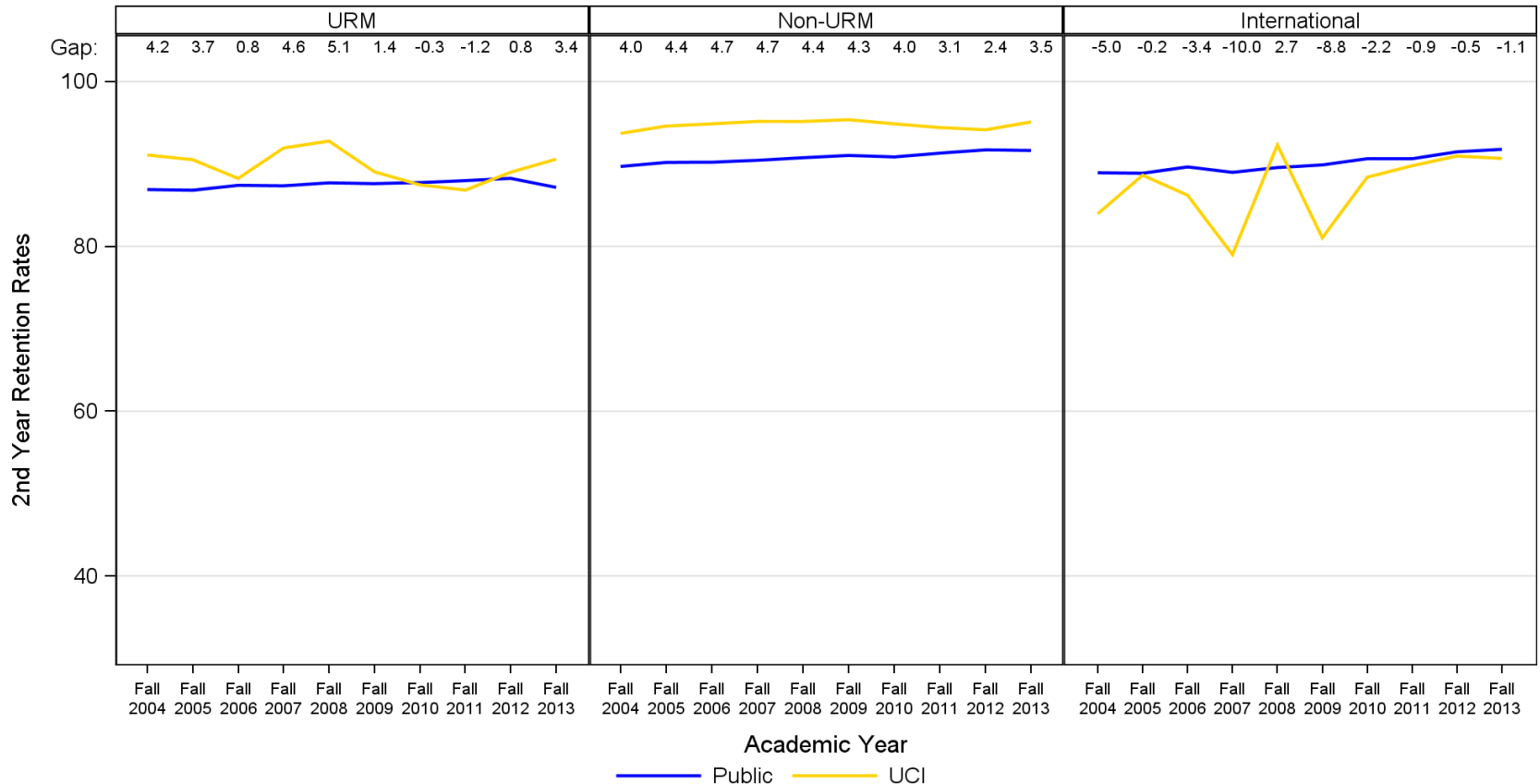


Source: OIR's tbl3rdWeekStudents and tblGraduation, various years; queried on 02/13/17.

UC Irvine
 Office of Institutional Research

But even with our internal Achievement Gaps, our freshman cohorts usually perform better than our AAU Public Peers...

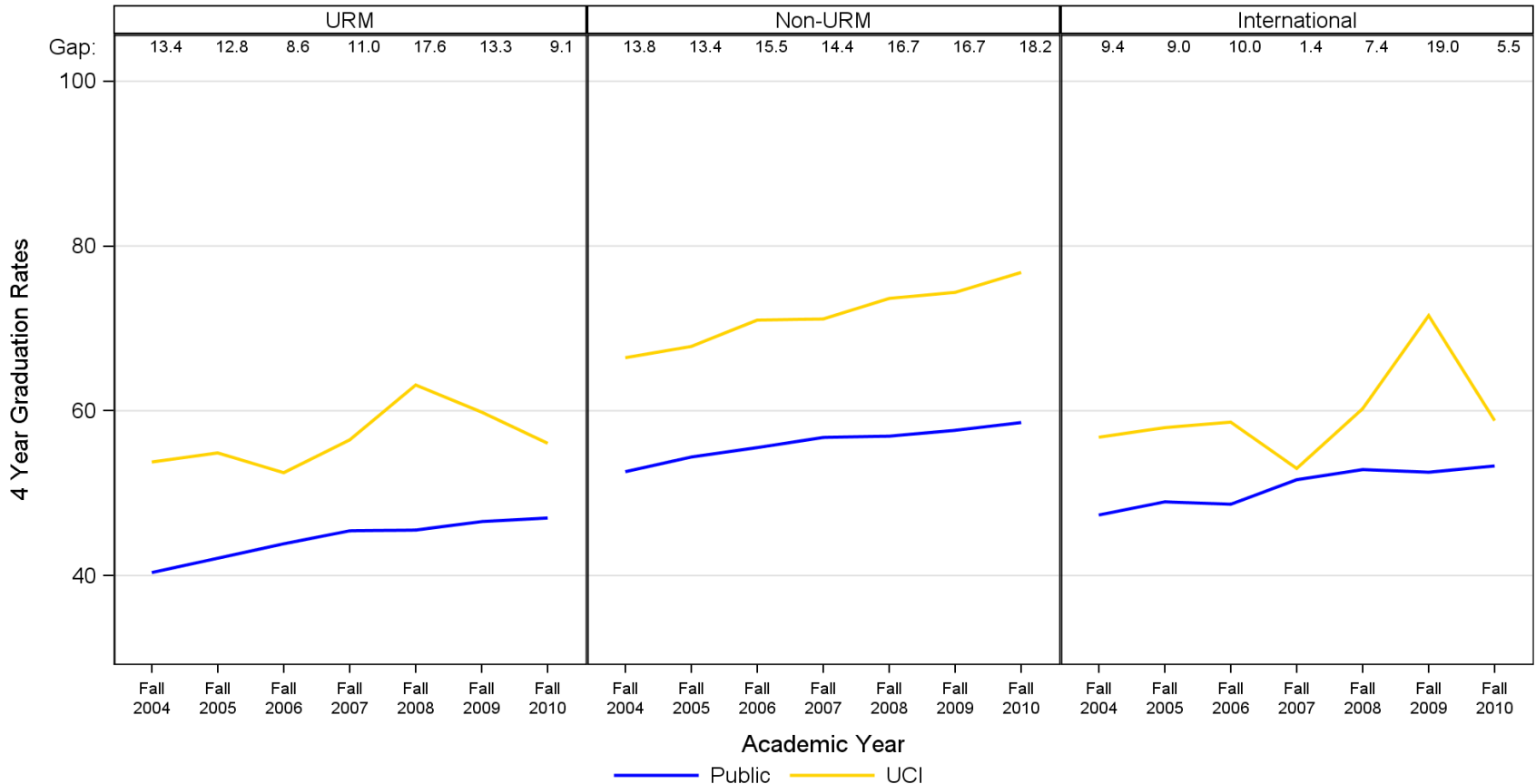
UCI and AAU Publics 2nd Year Retention Rates by Ethnicity from 2004 to 2013



Source: CSRDE AAUDE data, AAUDE Data Warehouse queried on 02/13/17.

But even with our internal Achievement Gaps, our freshman cohorts usually perform better than our AAU Public Peers...

UCI and AAU Publics 4 Year Graduation Rates by Ethnicity from 2004 to 2010

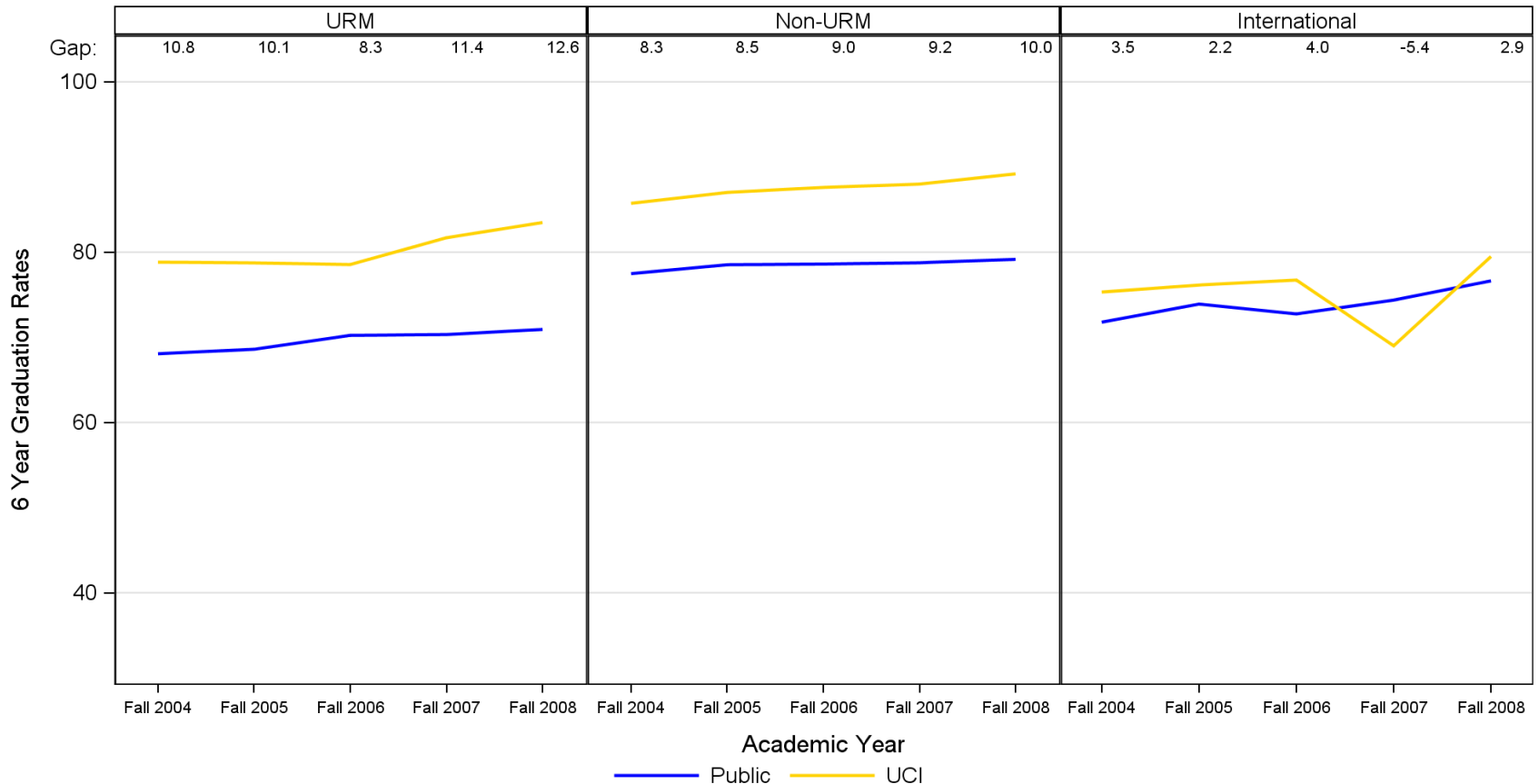


Source: CSRDE AAUDE data, AAUDE Data Warehouse queried on 02/13/17.

UC Irvine
Office of Institutional Research

But even with our internal Achievement Gaps, our freshman cohorts usually perform better than our AAU Public Peers...

UCI and AAU Publics 6 Year Graduation Rates by Ethnicity from 2004 to 2008

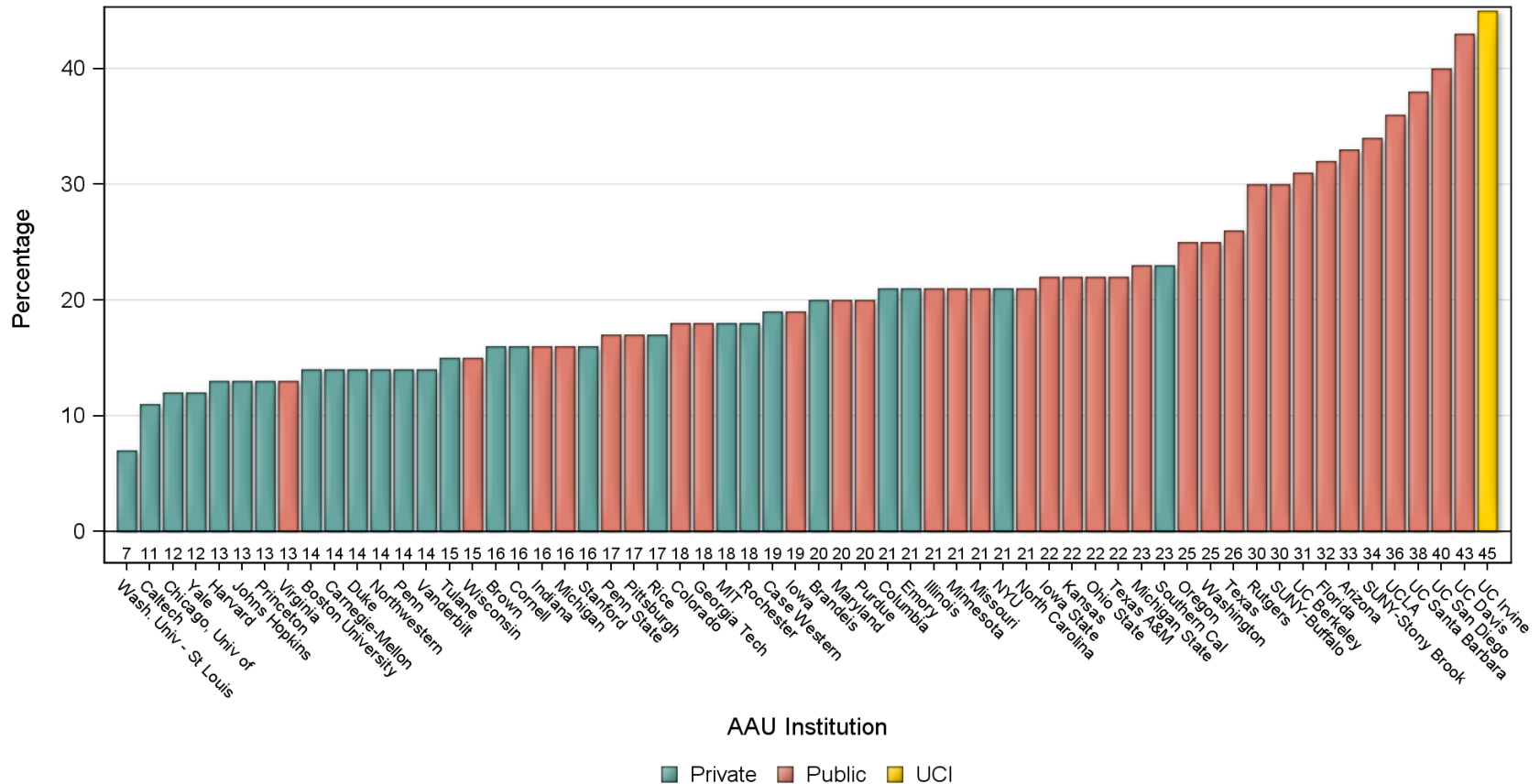


Source: CSRDE AAUDE data, AAUDE Data Warehouse queried on 02/13/17.

UC Irvine
Office of Institutional Research

Not only are our undergraduates made up of a high percentage of ethnic minorities, but also other 'At Risk' groups – Low income...

Percentage of Undergraduates Receiving Pell Grants
 Percentage type: Percent of undergraduate students receiving Pell grants, Year: 2013-2014

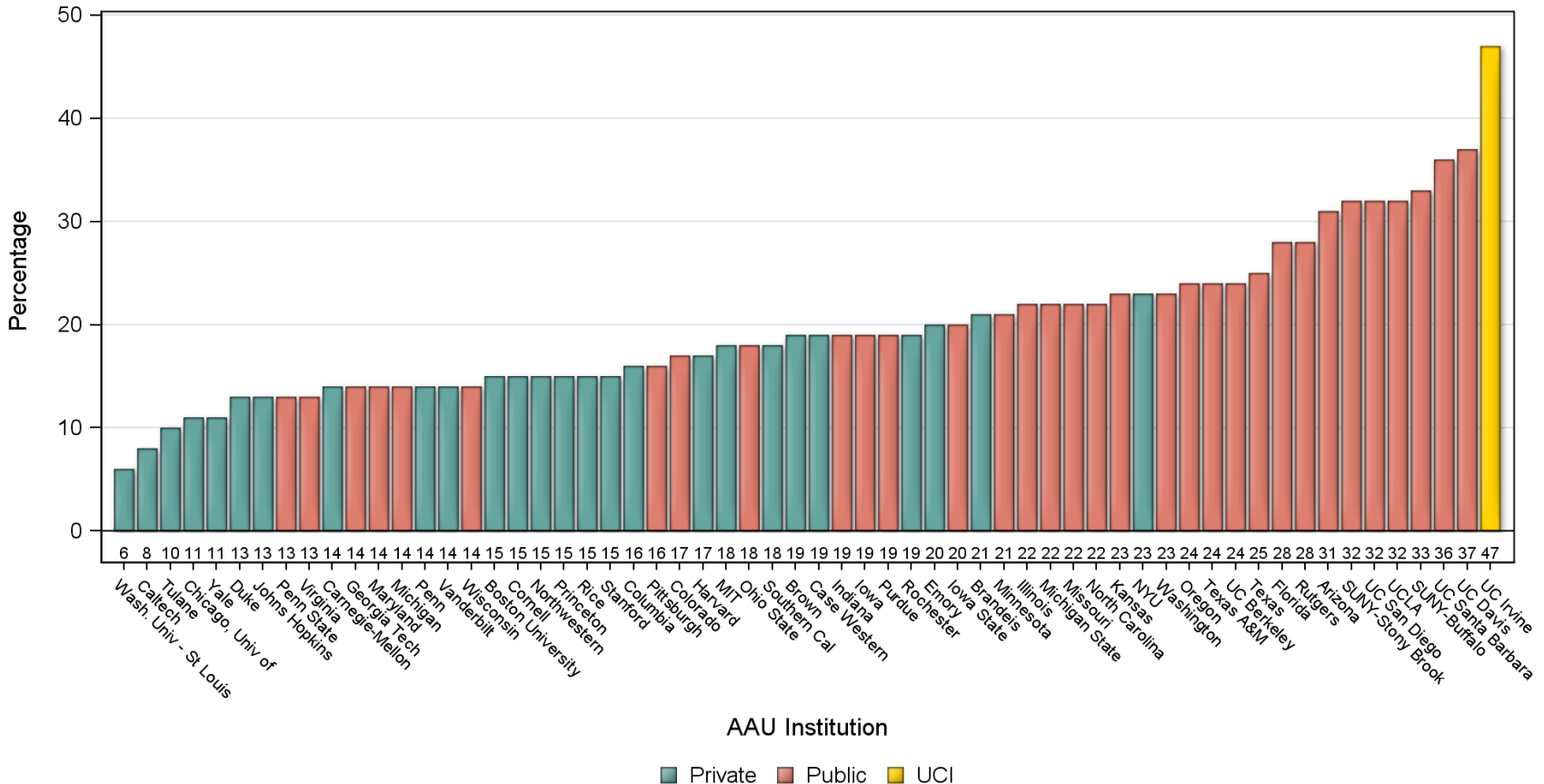


Source: IPEDS Financial Aid data, AAUDE Data Warehouse queried on 02/13/17.

Not only are our undergraduates made up of a high percentage of ethnic minorities, but also other 'At Risk' groups – Low income...

Percentage of Undergraduates Receiving Pell Grants

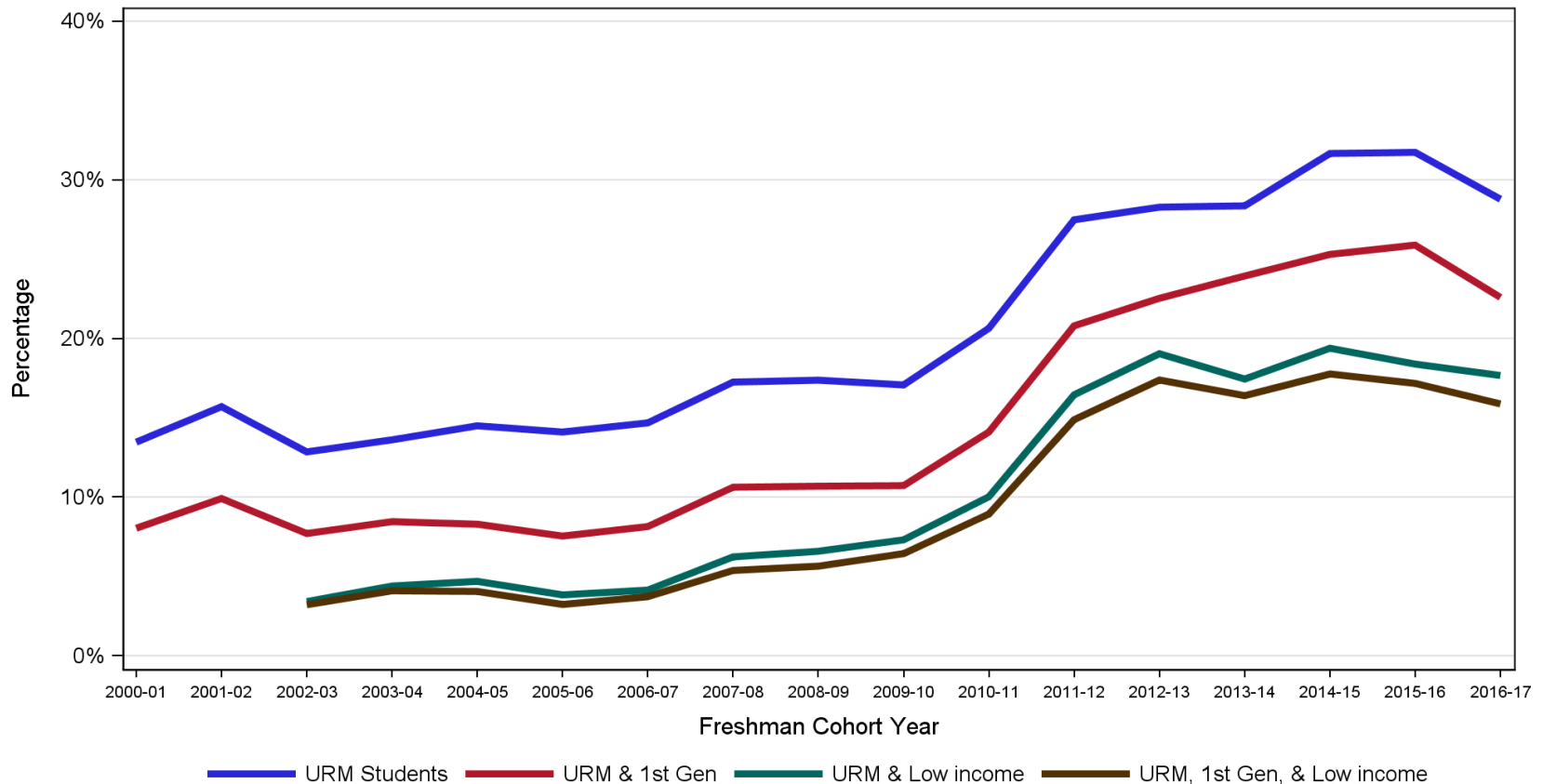
Percentage type: Percent of full-time first-time undergraduates receiving Pell grants, Year: 2013-2014



Source: IPEDS Financial Aid data, AAUDE Data Warehouse queried on 02/13/17.

With our own data, we can see the how combinations of these At-Risk factors have been increasing in our undergraduates...

**At-Risk Student Population combinations
as a Percentage of New Freshman**

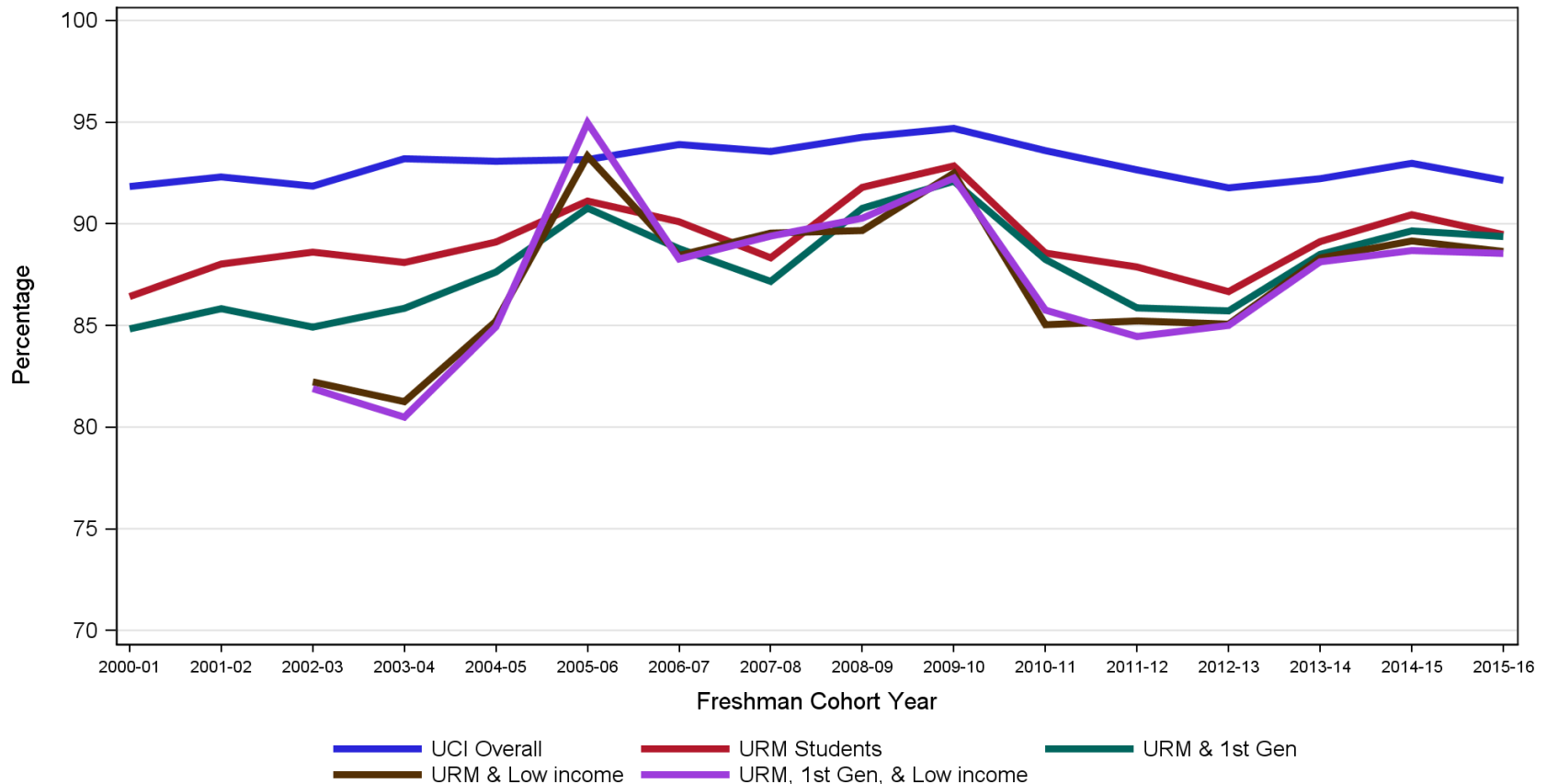


Source: OIR's tblGraduation, various years; queried on 02/13/17.

UC Irvine
Office of Institutional Research

And the impact of combinations of these At-Risk factors on Student Success rates: 2nd Year Retention...

At-Risk Student Population combinations and 2nd Year Retention Rates of New Freshman

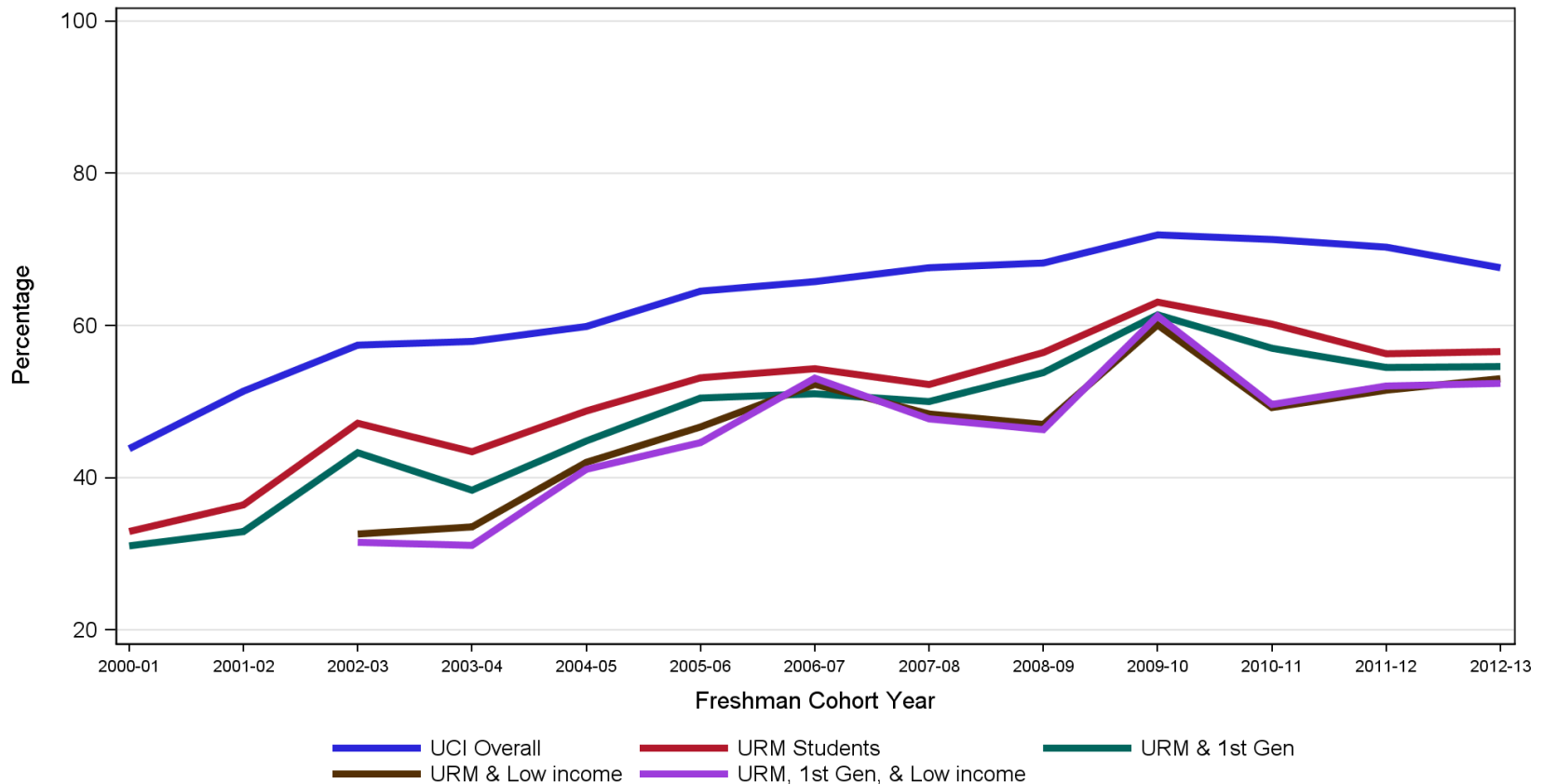


Source: OIR's tblGraduation, various years; queried on 02/13/17.

UC Irvine
Office of Institutional Research

And the impact of combinations of these At-Risk factors on Student Success rates: 4 Year Graduation rates...

At-Risk Student Population combinations and 4 Year Graduation Rates of New Freshman

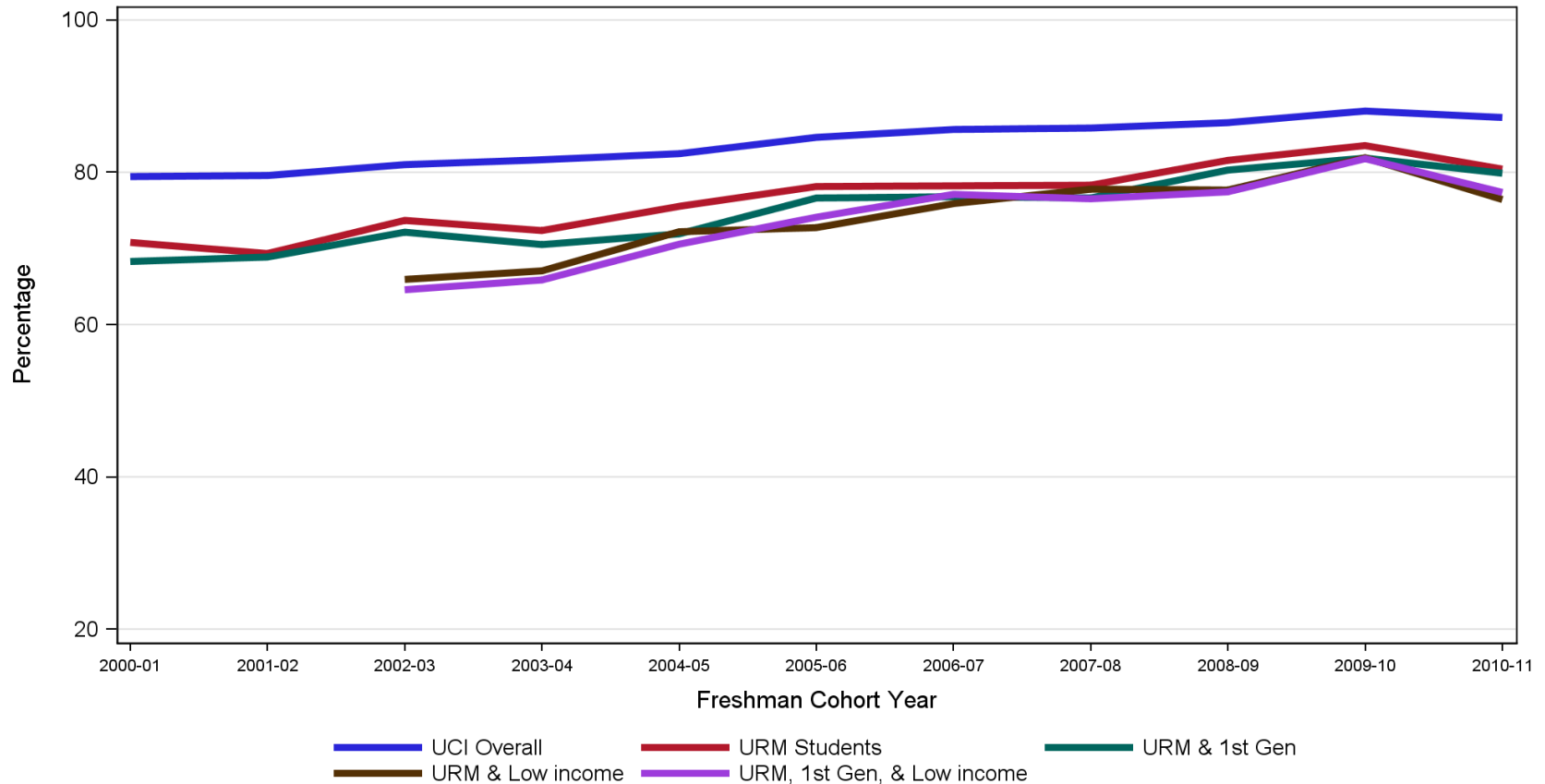


Source: OIR's tblGraduation, various years; queried on 02/13/17.

UC Irvine
Office of Institutional Research

And the impact of combinations of these At-Risk factors on Student Success rates: 6 Year Graduation rates...

At-Risk Student Population combinations and 6 Year Graduation Rates of New Freshman



Source: OIR's tblGraduation, various years; queried on 02/13/17.

UC Irvine
Office of Institutional Research

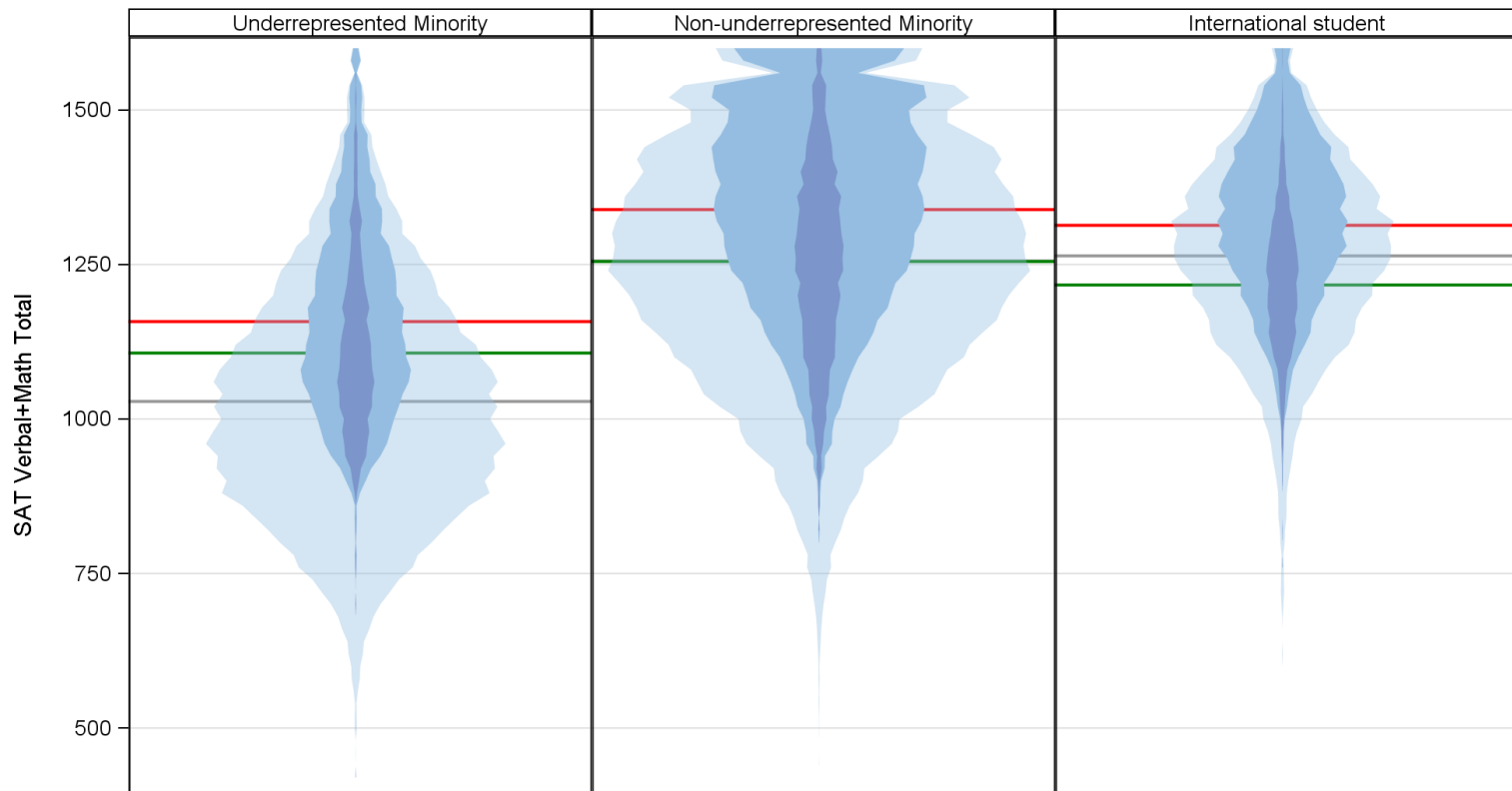
Did you notice the decrease in the Achievement Gap for 6 Year Graduation Rates?

- Our students who are in 'At Risk' populations, catch-up!
- There is an Achievement Gap, but it narrows dramatically from the gap seen at 4 years.
- How does this information inform Admissions?



UCI's Application, Admit, and Yield numbers vary noticeably depending on population

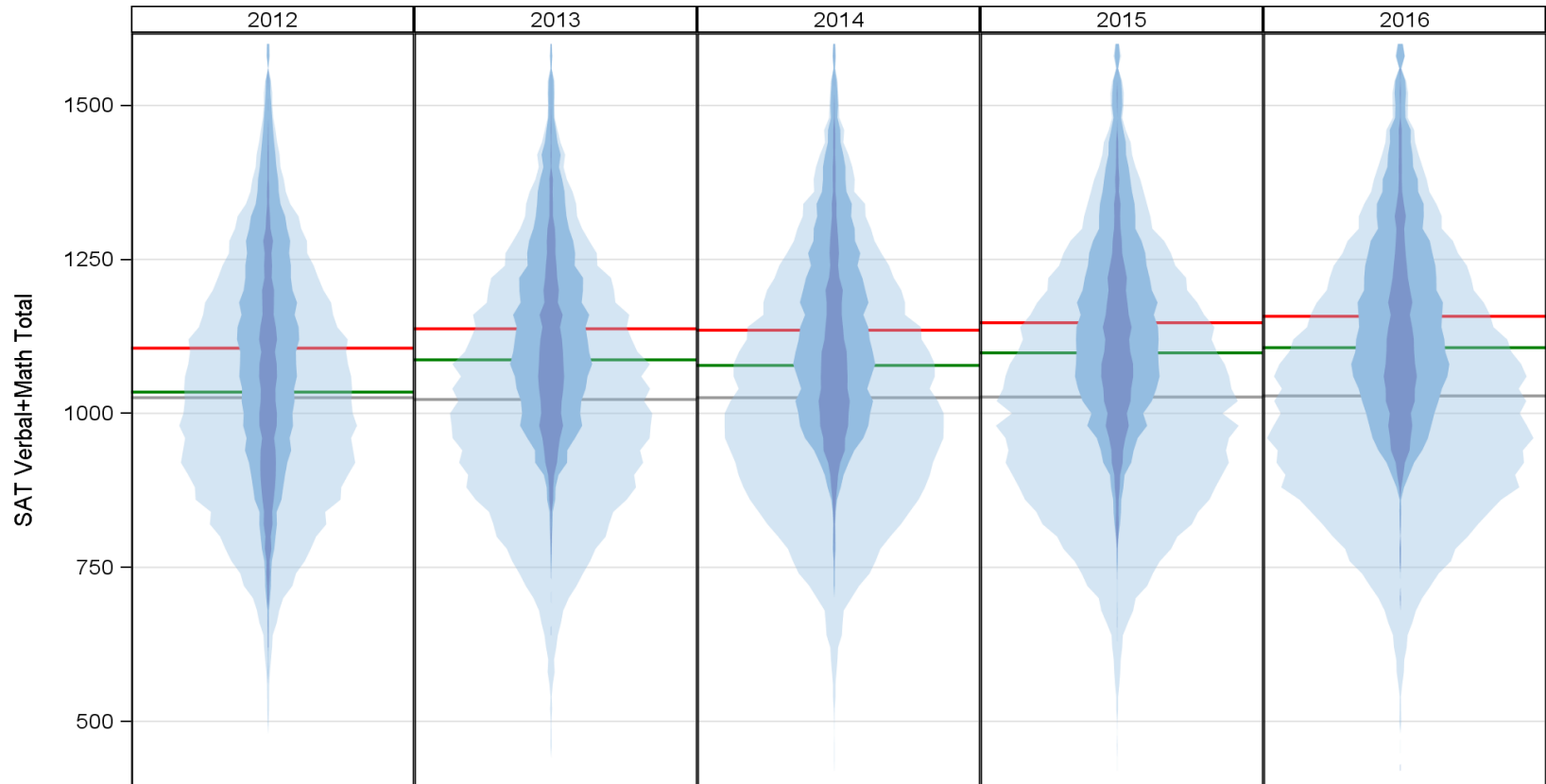
by URM Status and Enrollment Status
Fall 2016



Cycle status Applied Admitted Enrolled
 Mean SAT Applied Admitted Enrolled

With generally improving test scores for URMs...

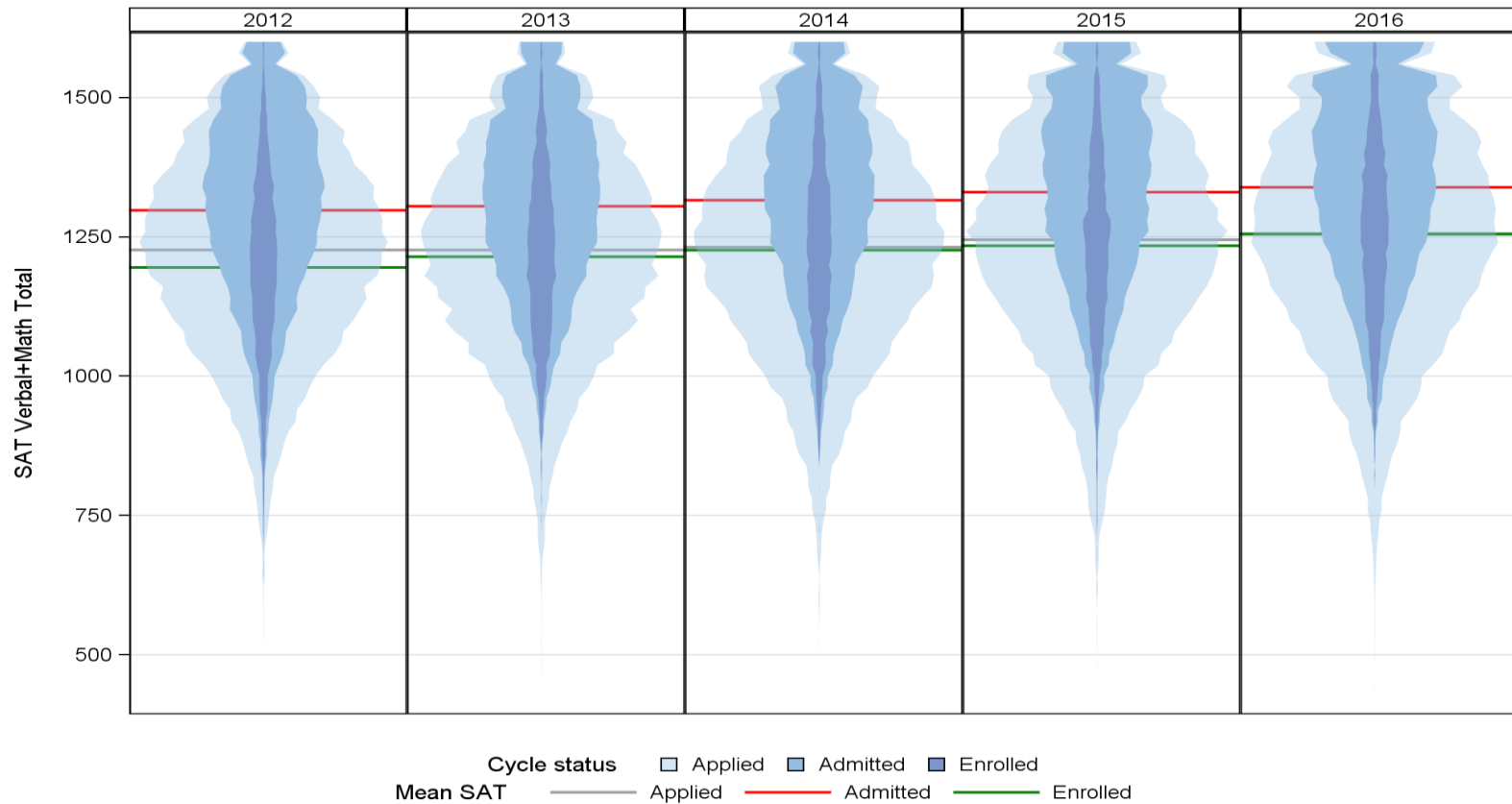
Fall 2012 through Fall 2016 New Freshman V+M SAT Total Scores for Underrepresented Minority Applicants by Enrollment Status



Cycle status Applied Admitted Enrolled
 Mean SAT Applied Admitted Enrolled

And non URMs...

Fall 2012 through Fall 2016 New Freshman V+M SAT Total Scores for Non-underrepresented Minority Applicants by Enrollment Status



As well as Internationals...

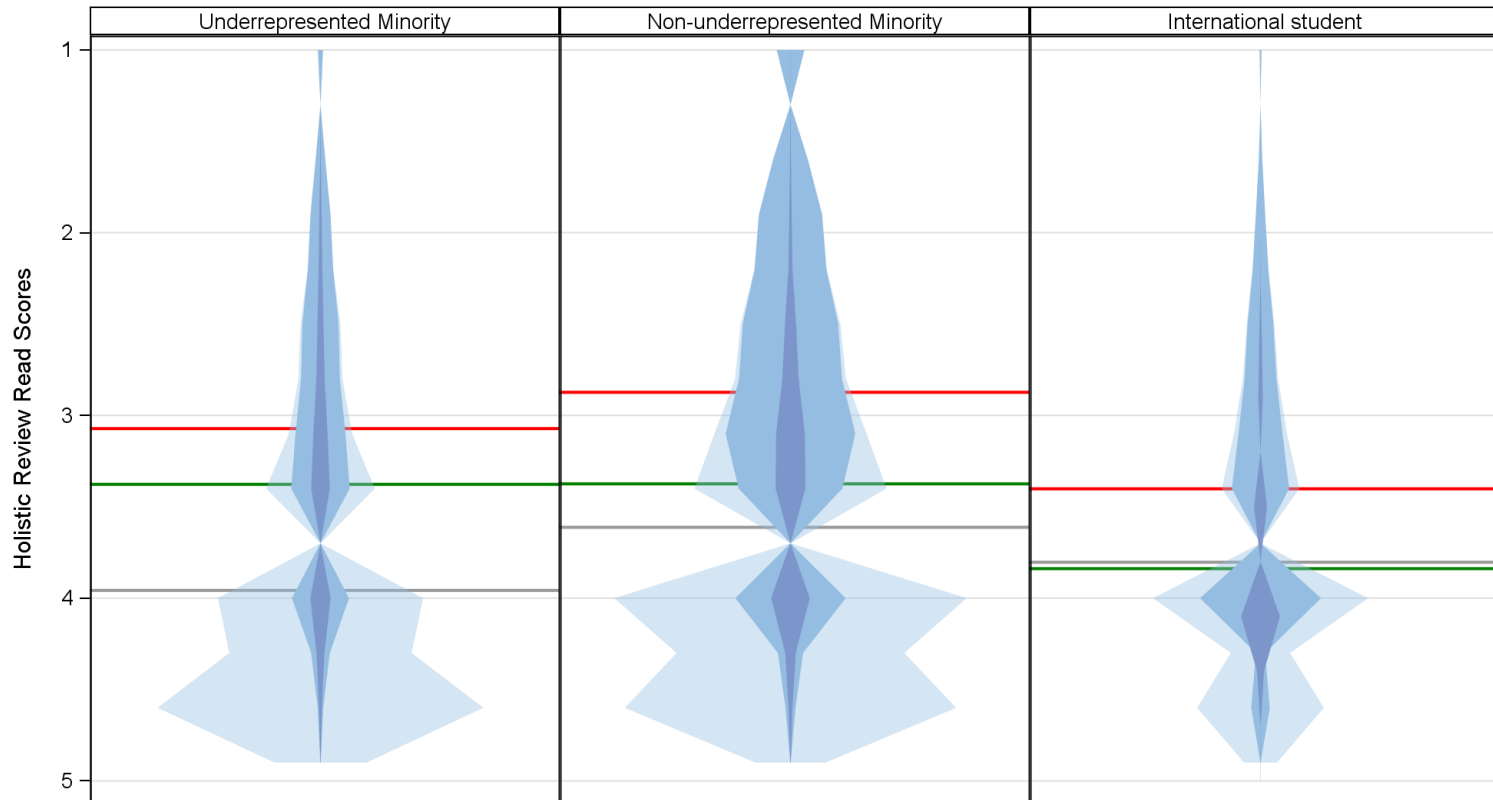
Fall 2012 through Fall 2016 New Freshman V+M SAT Total Scores for International Applicants by Enrollment Status



Cycle status Applied Admitted Enrolled
 Mean SAT Applied Admitted Enrolled

How are Read Scores represented?

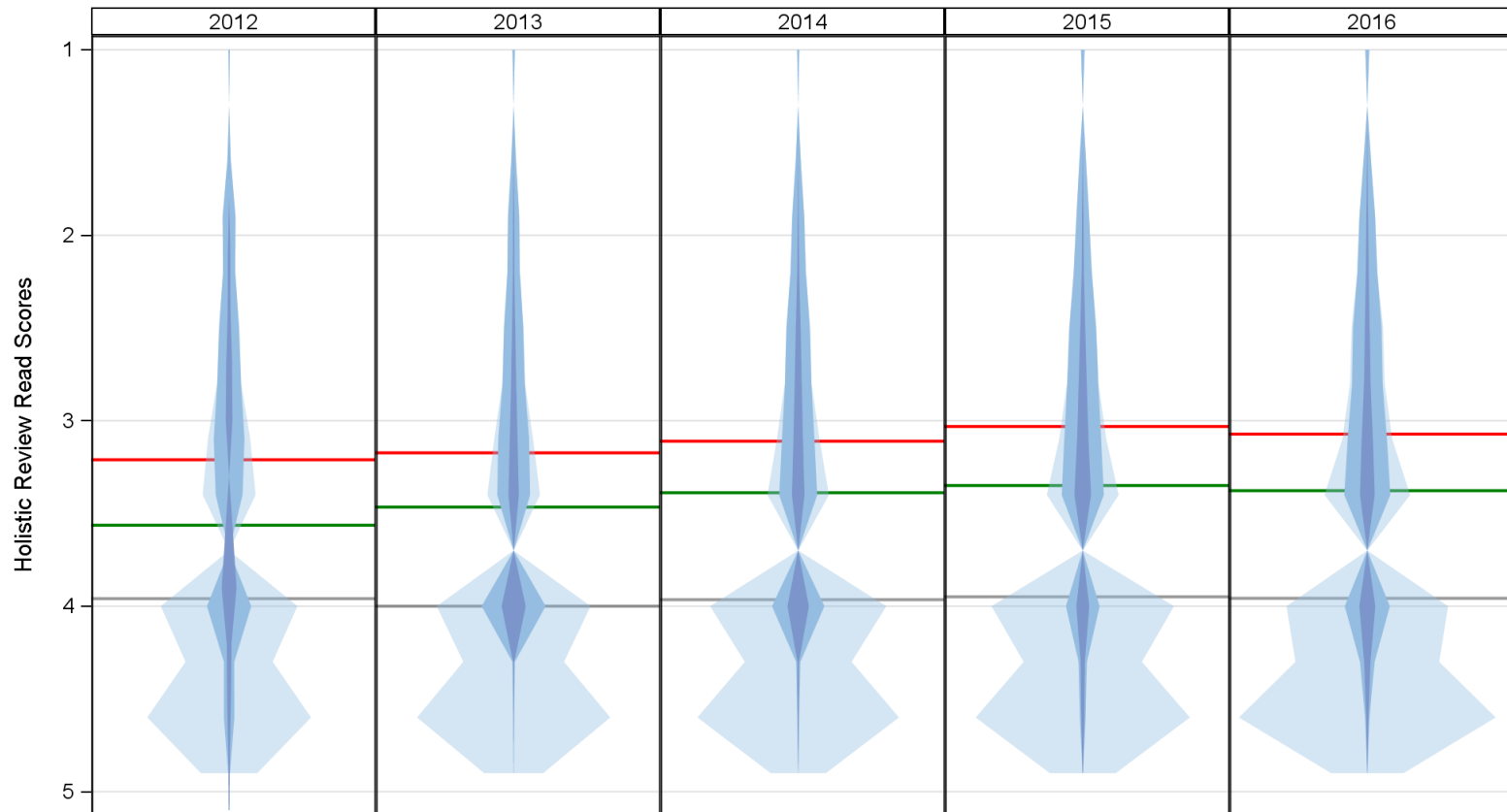
Fall 2012 through Fall 2016 New Freshman Holistic Review Read Scores
by URM Status and Enrollment Status
Fall 2016



Cycle status Applied Admitted Enrolled
 Mean SAT — Applied — Admitted — Enrolled

URM trends...

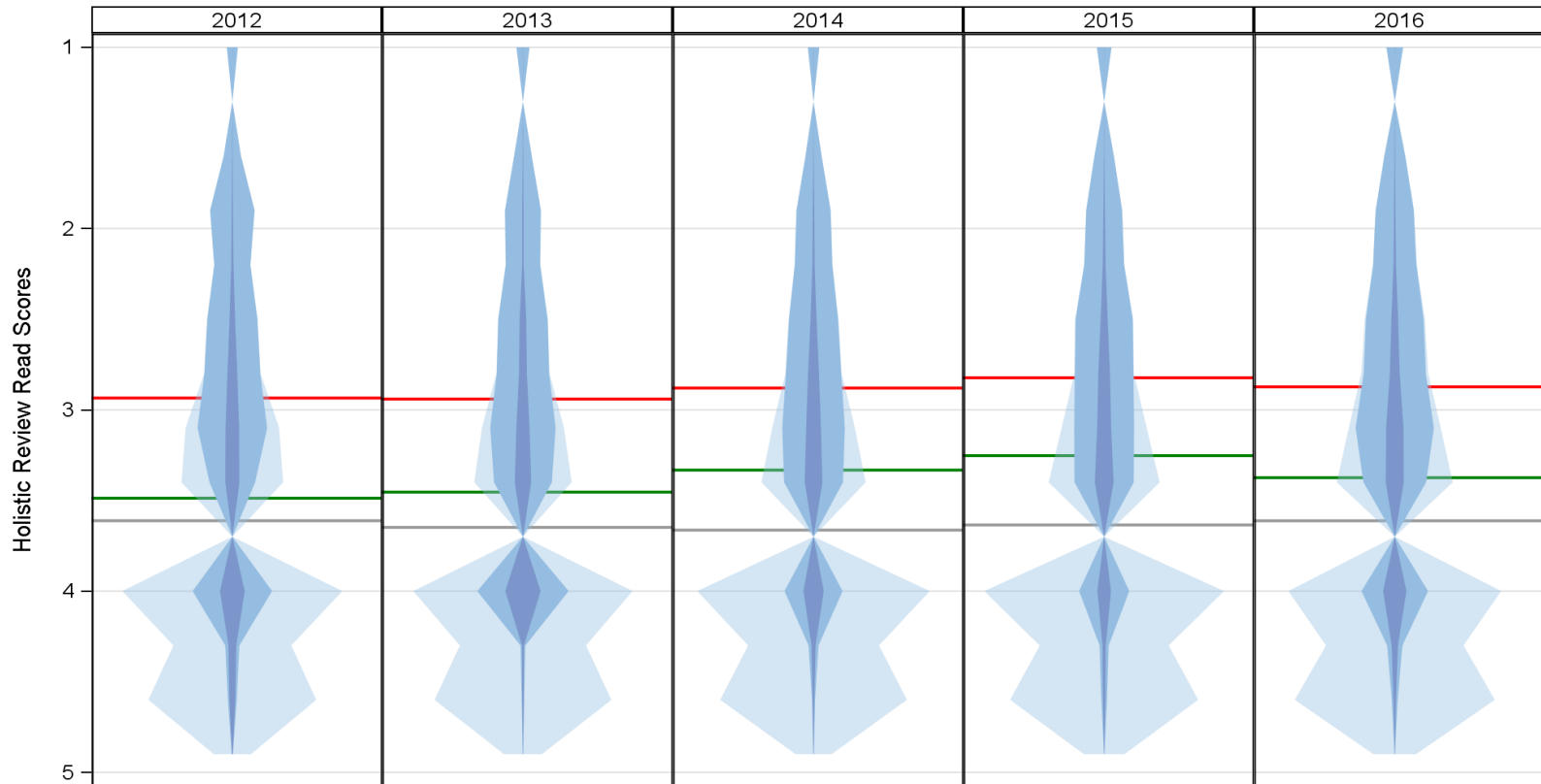
Fall 2012 through Fall 2016 New Freshman Holistic Review Read Scores for Underrepresented Minority Applicants by Enrollment Status



Cycle status Applied Admitted Enrolled
 Mean SAT Applied Admitted Enrolled

Domestic Non-URM trends...

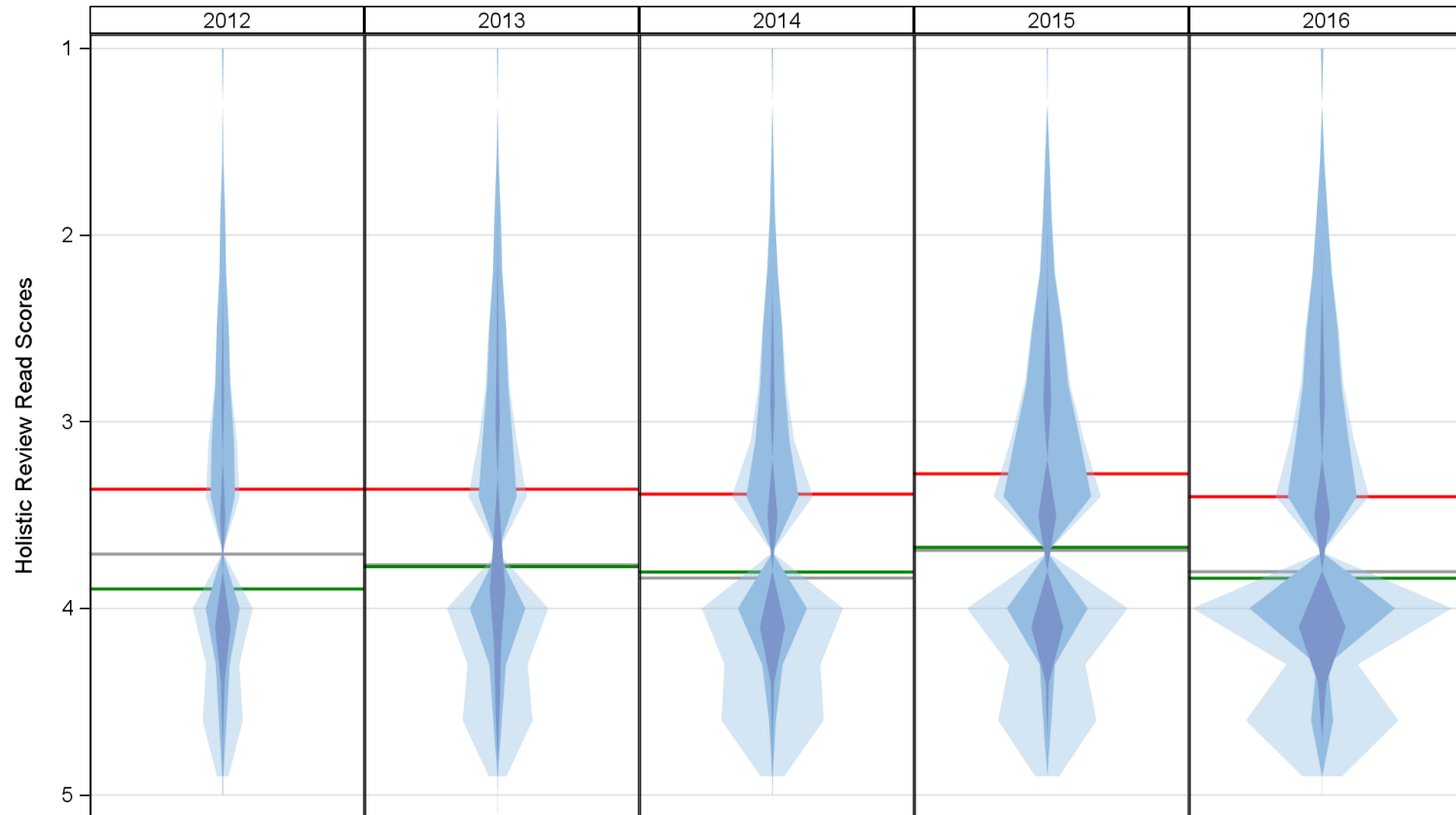
Fall 2012 through Fall 2016 New Freshman Holistic Review Read Scores for Non-underrepresented Minority Applicants by Enrollment Status



Cycle status Applied Admitted Enrolled
 Mean SAT Applied Admitted Enrolled

International trends...

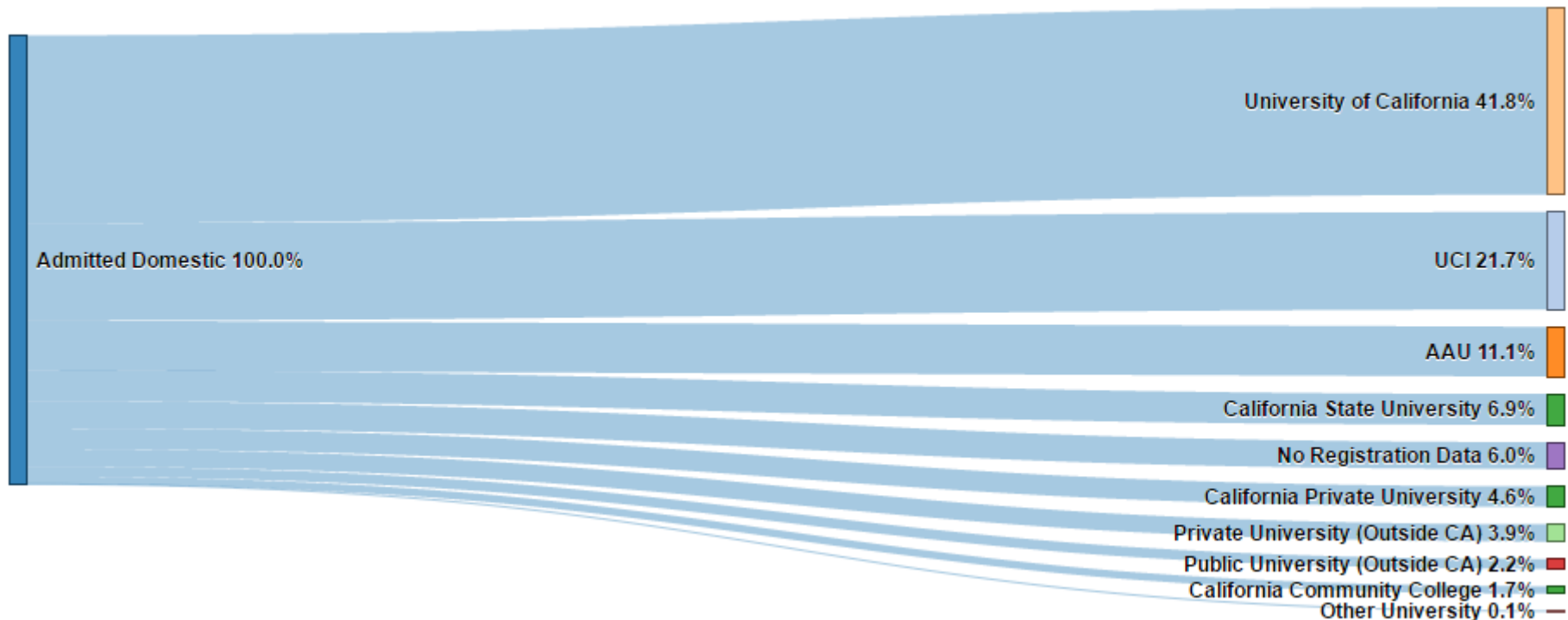
Fall 2012 through Fall 2016 New Freshman Holistic Review Read Scores for International Applicants by Enrollment Status



Cycle status Applied Admitted Enrolled
 Mean SAT — Applied — Admitted — Enrolled

If they are admitted but don't come to UCI, where do they go? In general, to another UC...

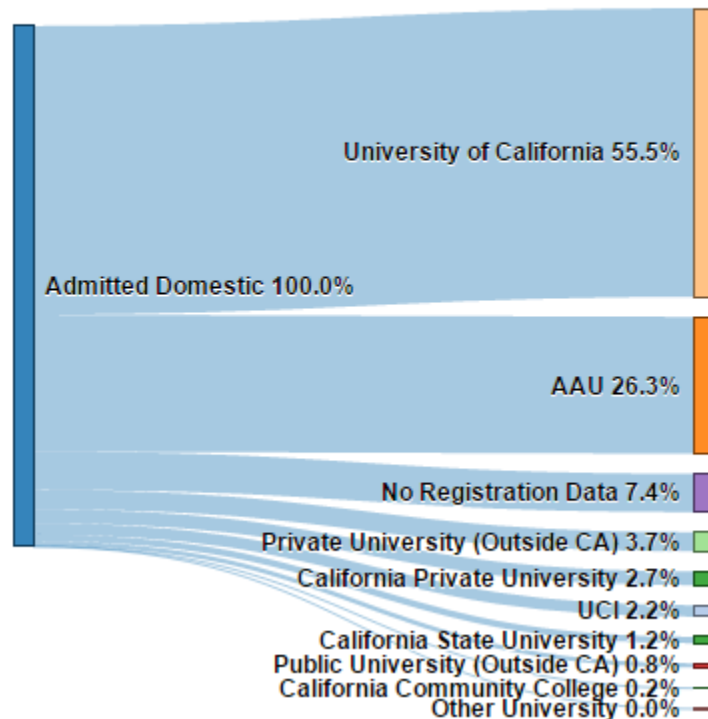
All Admitted Undergraduates from 2011 through 2016



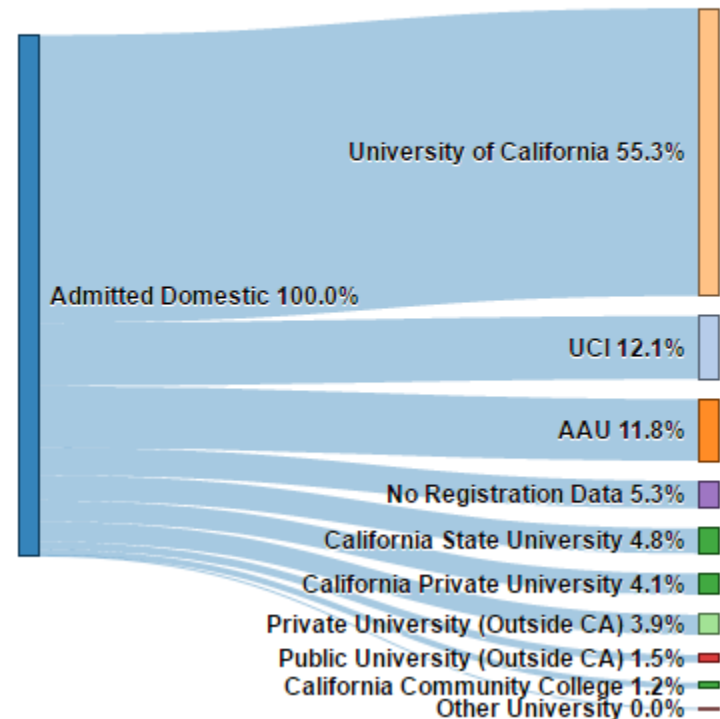
But if looked at by Read Score...

All Admitted Undergraduates from 2011 through 2016

Read Score 1



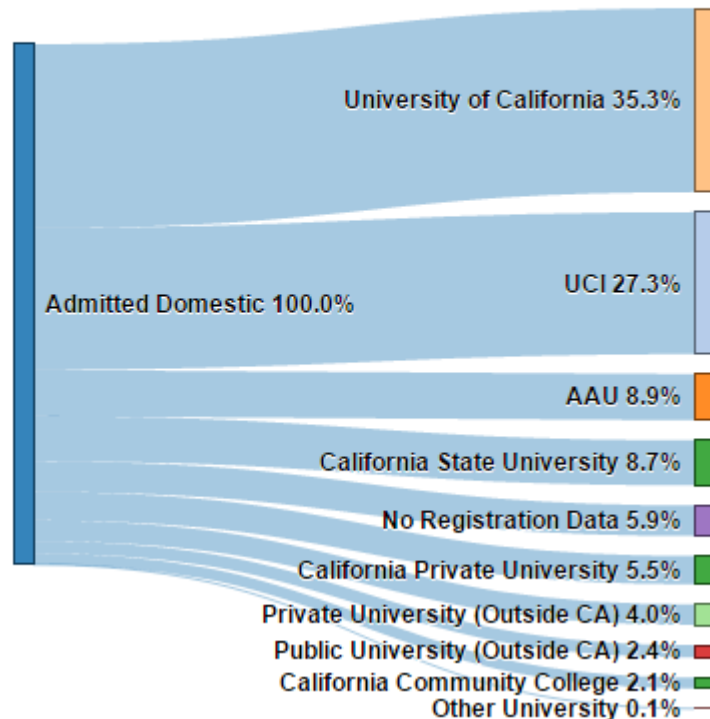
Read Score 2



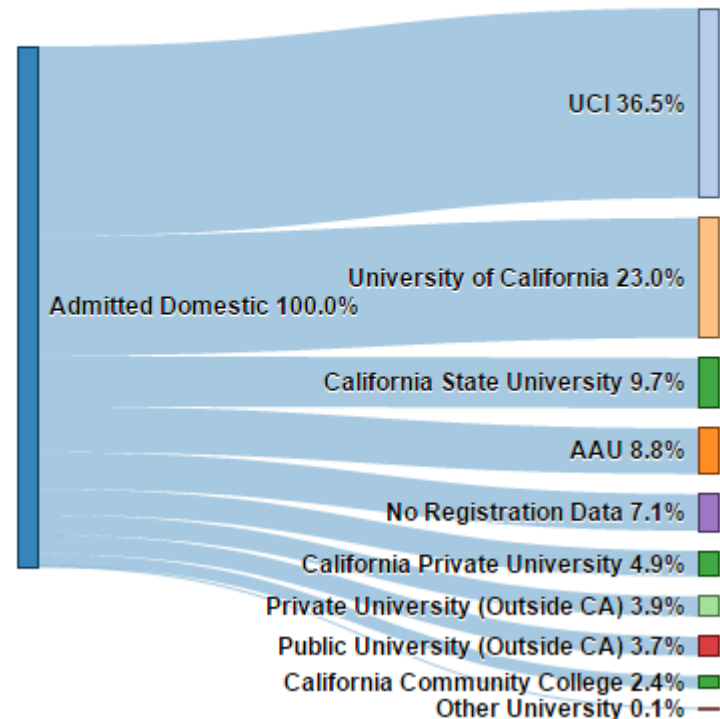
But if looked at by Read Score...

All Admitted Undergraduates from 2011 through 2016

Read Score 3



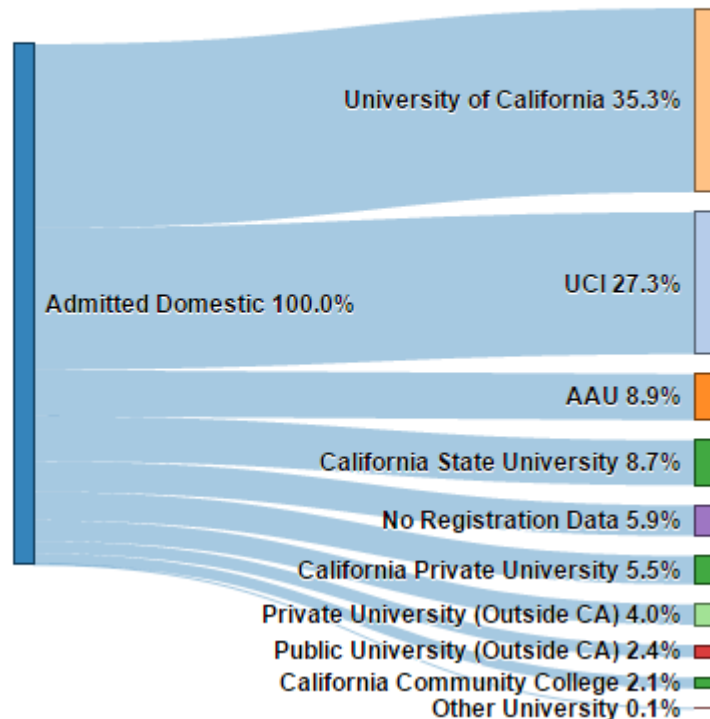
Read Score 4 & 5



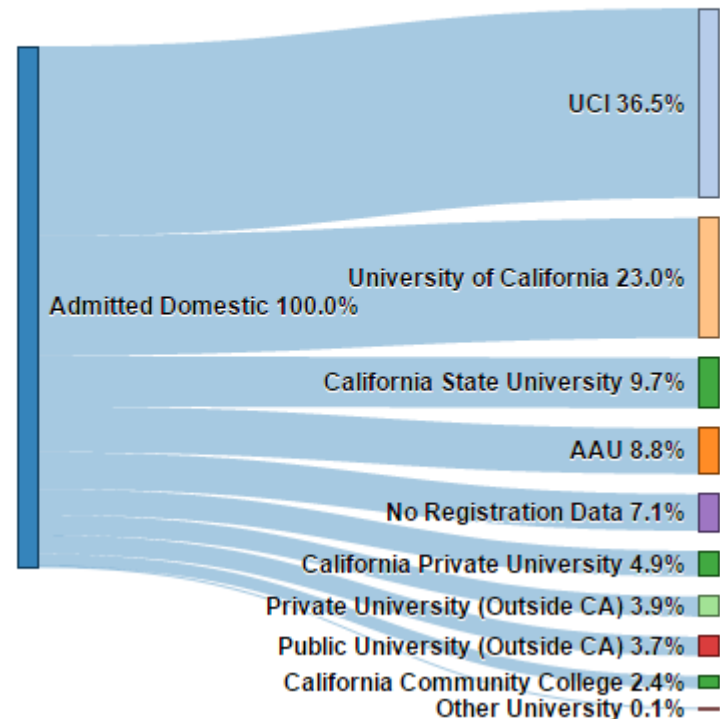
But if looked at by Read Score...

All Admitted Undergraduates from 2011 through 2016

Read Score 3



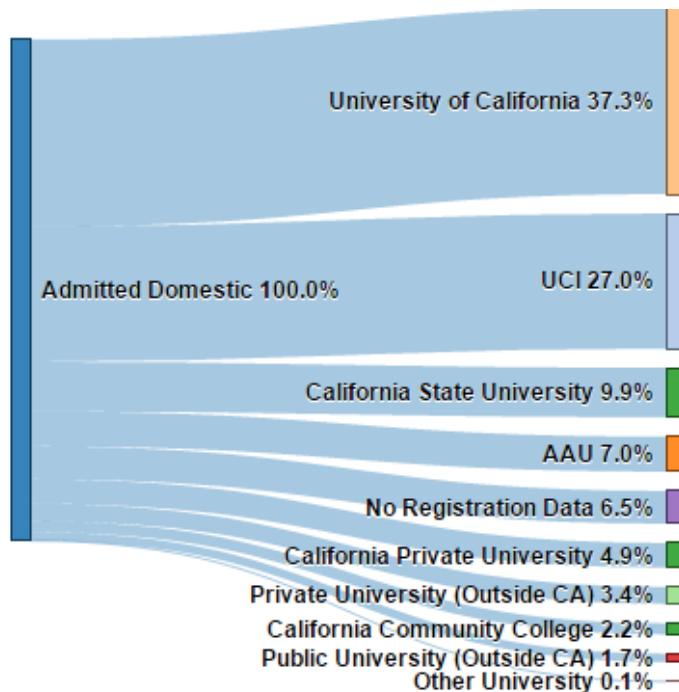
Read Score 4 & 5



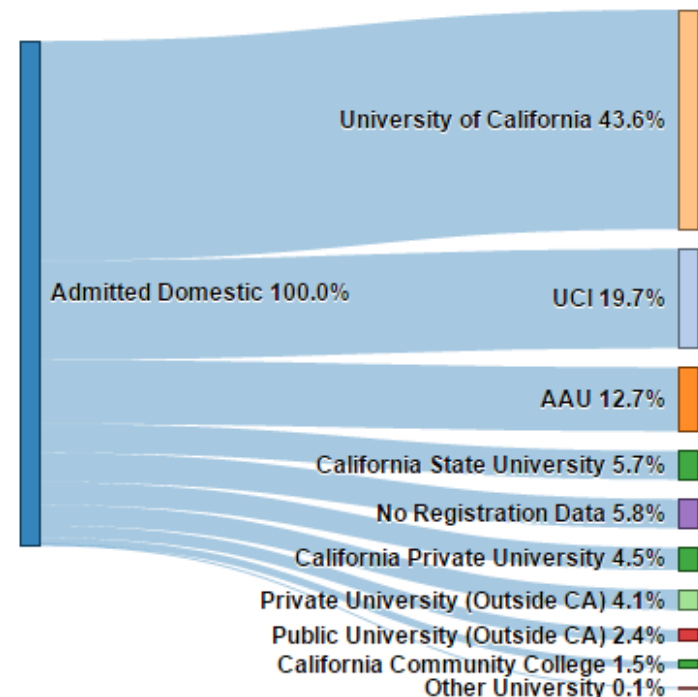
If we also include URM status...

All Admitted Undergraduates from 2011 through 2016

URM



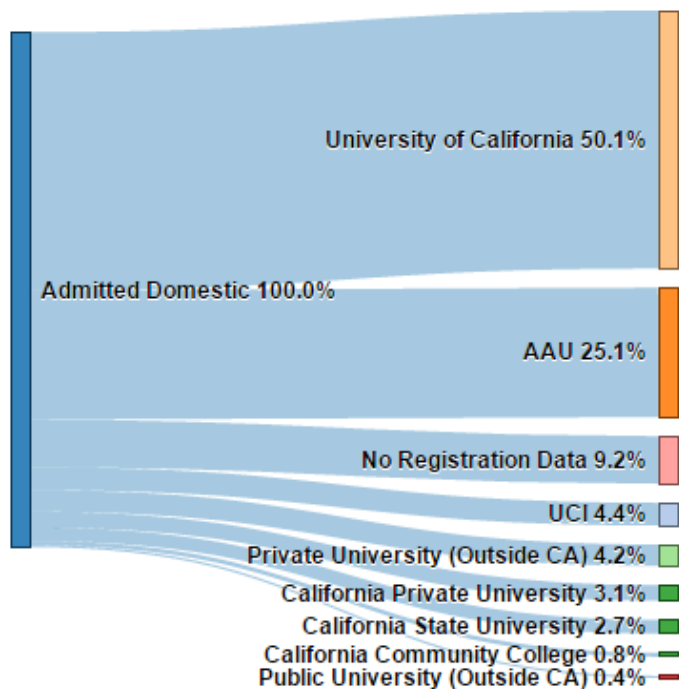
Non-URM



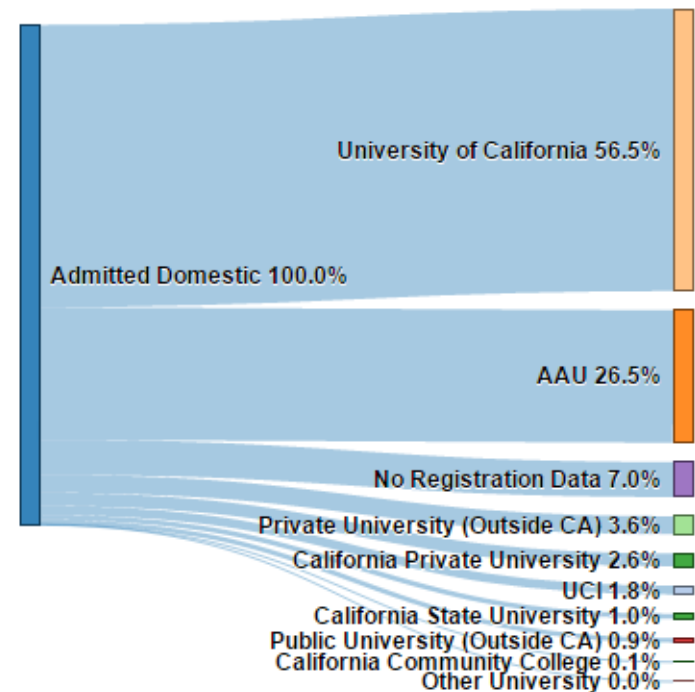
and by Read Scores...

Admitted Undergraduates with Read Scores of 1, 2011 through 2016

URM



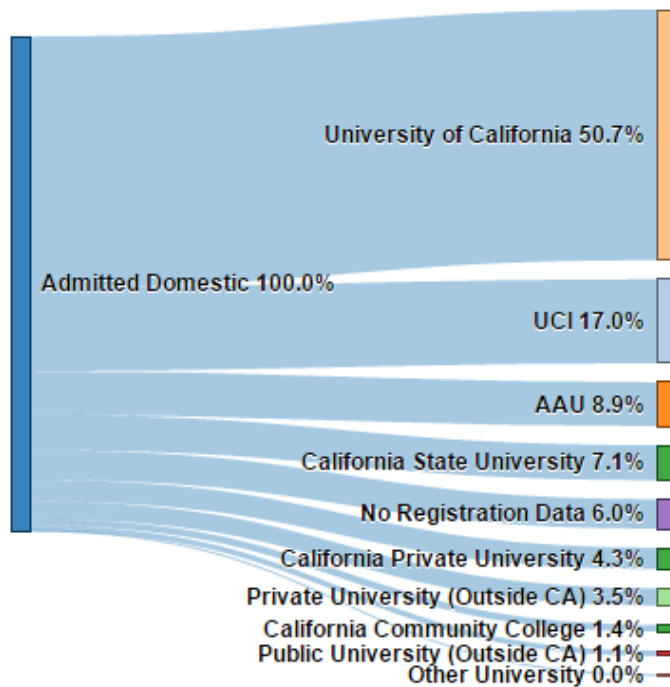
Non-URM



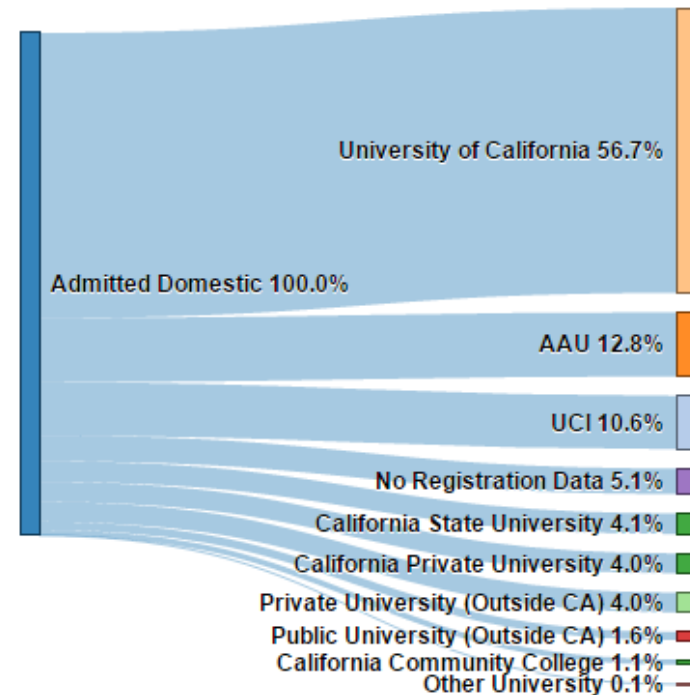
and by Read Scores...

Admitted Undergraduates with Read Scores of **2**, 2011 through 2016

URM



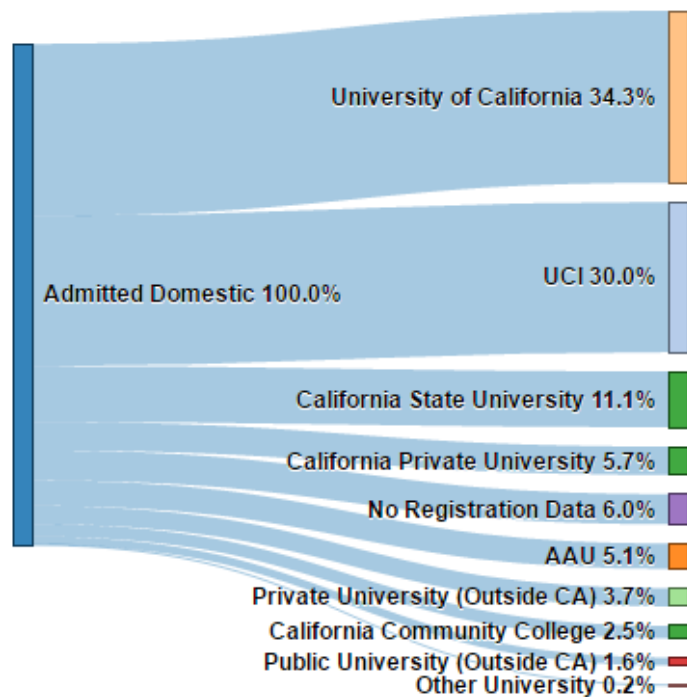
Non-URM



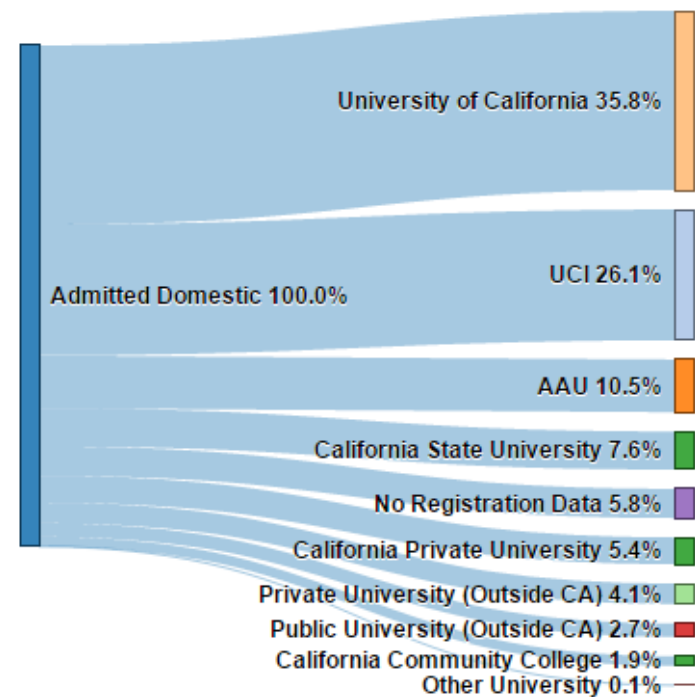
and by Read Scores...

Admitted Undergraduates with Read Scores of **3**, 2011 through 2016

URM



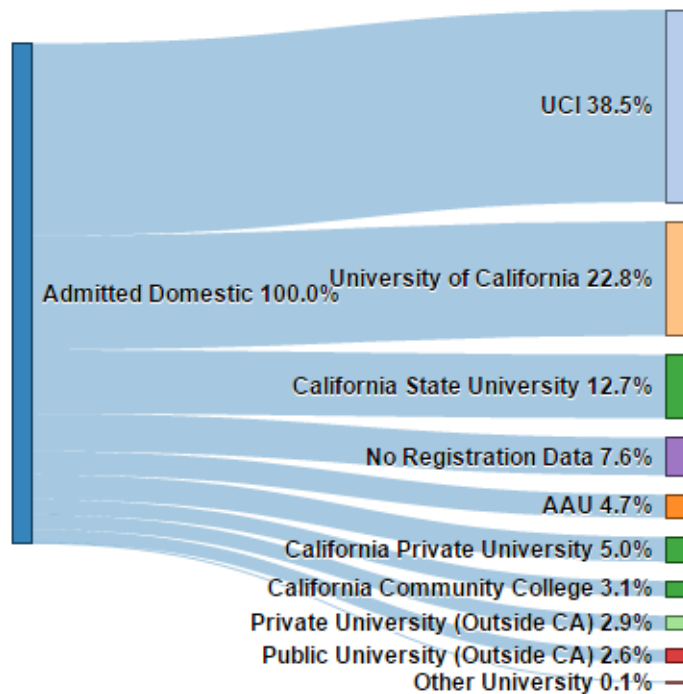
Non-URM



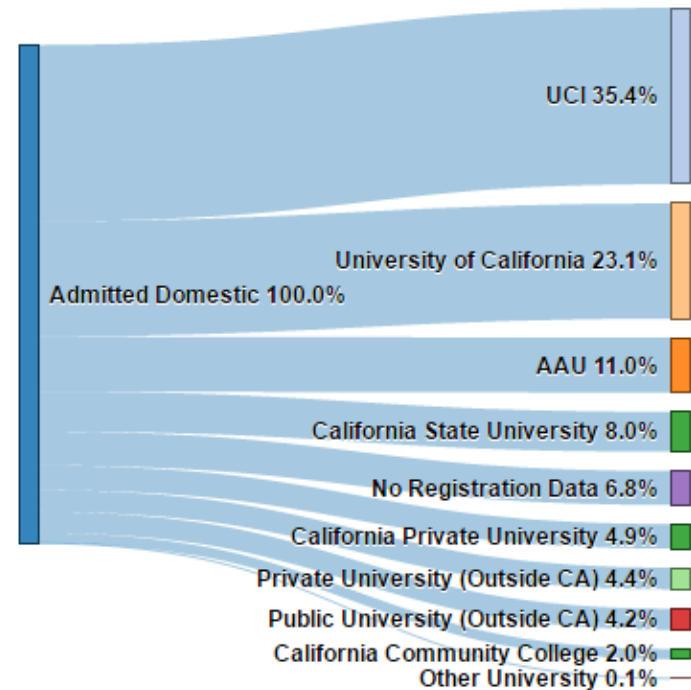
and by Read Scores...

Admitted Undergraduates with Read Scores of **4 & 5**, 2011 through 2016

URM



Non-URM



Where does this leave us?

- Maybe with more questions than answers...
 - A lot of data that we can explore.
 - Easy to increase certain student success metrics
 - But would it be contrary to our Mission as a public university?

Where does this leave us?

- We are also doing *something very right* for under-served populations
 - NYT stories highlighting our role in social mobility
- And relative to many of our sister institutions with higher SAT averages, we have higher graduation rates

Where does this leave us?

- So we don't want to “break” what is working
- And given our Strategic Plan, we do want to find ways to increase the proportion of our “1s” and “2s” Read scores that choose to come to UCI.

Where does this leave us?

- What is the type of actionable information that would be useful for CUARS to have?

Discussion and Questions...

Contact Information:

Ryan Cherland

email: ryan.cherland@uci.edu