

PLEASE DO NOT MARK ON THIS QUIZ PAPER!
Your TA will collect for use in the next session.

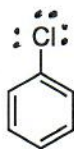
key

Bubble in your ENTIRE student ID

Mark your scantron as TEST B

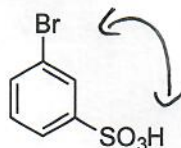
Quiz G

1. To what position does this directing group direct?



- A ortho
- B meta
- C para
- D ortho, para
- E ortho, meta

2. What reagents?



meta

∴ install
-SO₃H first

1. SO₃, H₂SO₄

2. Br₂, FeBr₃

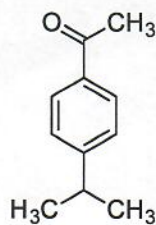
A

1. Br₂, FeBr₃

2. SO₃, H₂SO₄

B

3. What reagents?



para

∴ install
alkyl group
first

1. + AlCl₃

2. + AlCl₃

A

1. + AlCl₃

2. + AlCl₃

B