

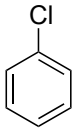
PLEASE DO NOT MARK ON THIS QUIZ PAPER!  
Your TA will collect for use in the next session.

Bubble in your ENTIRE student ID

Mark your scantron as TEST B

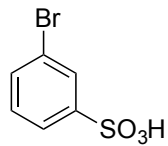
Quiz G

1. To what position does this directing group direct?



- A ortho
- B meta
- C para
- D ortho, para
- E ortho, meta

2. What reagents?



1.  $\text{SO}_3, \text{H}_2\text{SO}_4$

1.  $\text{Br}_2, \text{FeBr}_3$

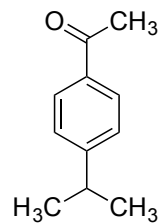
2.  $\text{Br}_2, \text{FeBr}_3$

2.  $\text{SO}_3, \text{H}_2\text{SO}_4$

A

B

3. What reagents?



1.  $\text{H}_3\text{C}-\text{C}(\text{Cl})(\text{CH}_3) + \text{AlCl}_3$

1.  $\text{Cl}-\text{C}(=\text{O})-\text{CH}_3 + \text{AlCl}_3$

2.  $\text{Cl}-\text{C}(=\text{O})-\text{CH}_3 + \text{AlCl}_3$

2.  $\text{H}_3\text{C}-\text{C}(\text{Cl})(\text{CH}_3) + \text{AlCl}_3$

A

B