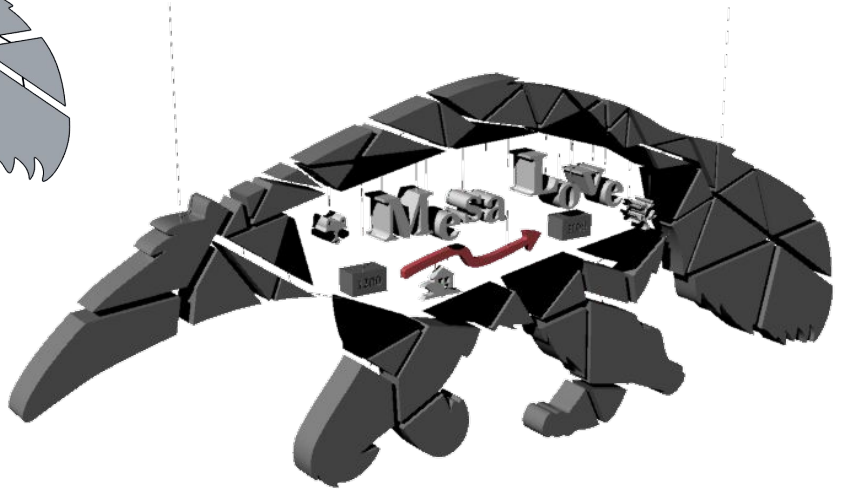
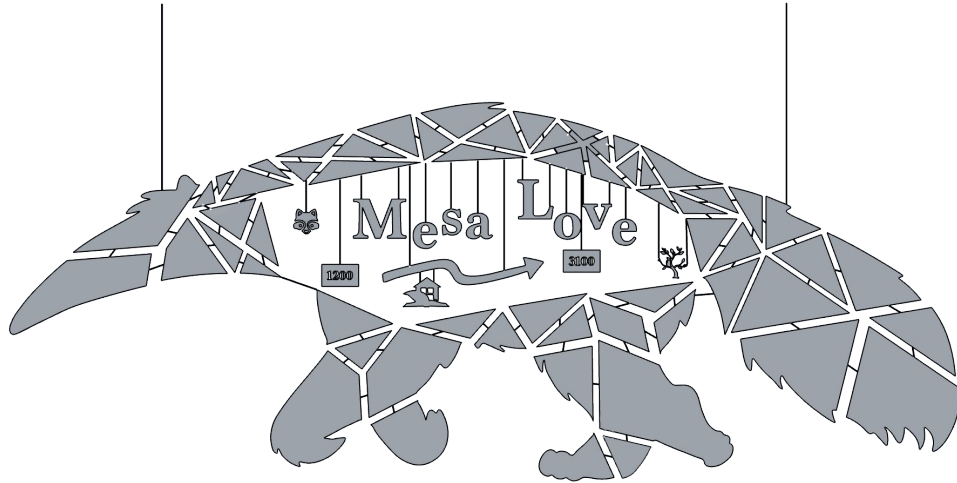

Red Team: One Love, One Mesa

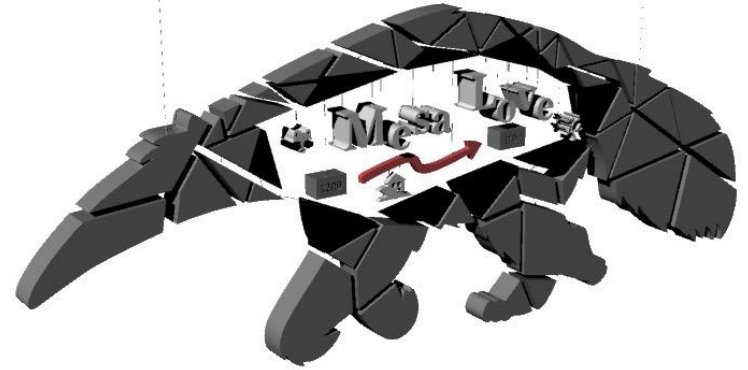
— Isabella Mendoza, Timmy Nguyen,
Rebecca Rosso, Sharon To —

One Love, One Mesa



Description & Features

- Large anteater
 - Comprised of triangular shapes
 - Hanging from ceiling
 - Pieces connected using durable wires
- Hollow middle section
 - “Mesa Love” in block letters
 - Dangling items which represent Mesa Court
 - Raccoons
 - Trees
 - Student housing sustainability logo
 - Timeline of residency growth



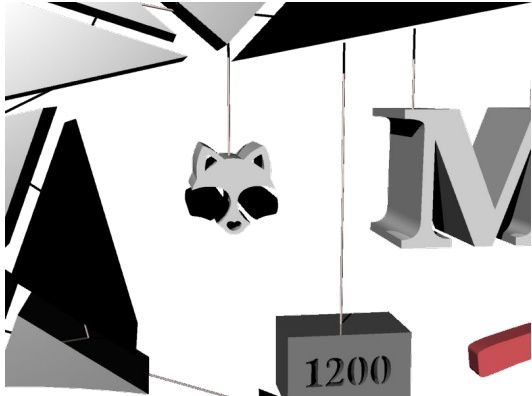
Close-up Views



"Mesa Love" motto



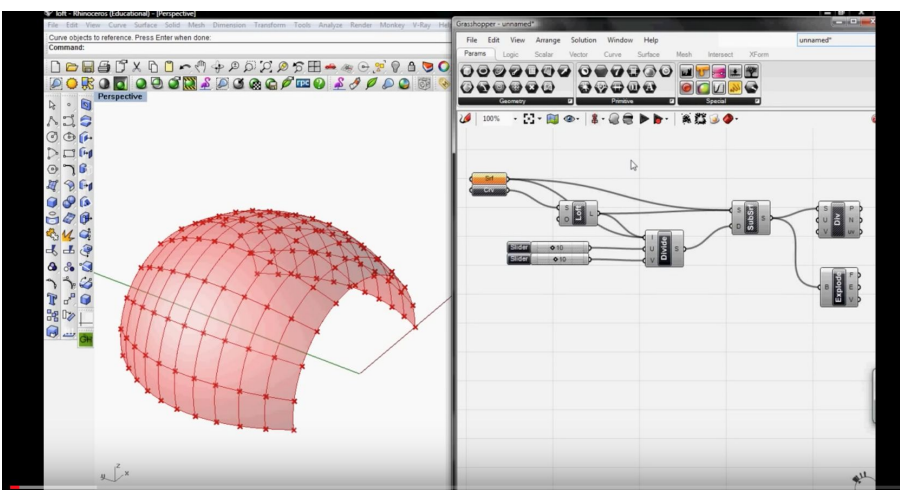
Growth in residents over the years



Raccoons



Trees



Grasshopper is a graphical algorithm editor tightly integrated with Rhino 3D's modeling tools.

- We would use Grasshopper to split the large anteater form into many angular shapes that vary in size.
- We would utilize Professor Jackson's familiarity with this software to help execute this step.

Location: Mesa Court Community Center

- Contribute to classic Mesa
 - Alleviate jealousy of “giving all the cool things” to the towers
- Increase foot traffic in classic Mesa
 - Promote connections between residents from both classic and new parts of Mesa
 - This can be a monument in which becomes a portion of UCI that students could come and take photos with and post on social media.

AEIEE:

- Attraction
 - Eye-catching, large scale
 - Familiar ant eater that invokes acceptance of sculpture and school pride
 - “Mesa Love” caption allows students to feel the sculpture was made just for them
- Entry
 - The smaller elements of the sculpture invite closer looks
 - Informational plaque to the side of the sculpture explains the project including the unique and cutting-edge 3D printed aspect
- Interaction
 - The plaque with information would mention the ability for residents to add their own 3D printed elements with wire and approval from UCI, and also would invite residents to take photos with the sculpture and post to social media using the hashtags #UCIMesaLove and #UCISustainability
- Engagement
 - Includes a timeline of the residency growth promoting thought about Mesa’s history and the residents’ place in history
- Extension
 - Residents may add their own items to represent specific Halls as time goes on

Project Execution

- Prior to Week 10, we are aiming to have the modeling and purchasing done. By mid-spring, we will have all of the pieces printed and ready for assembling.
- Once the pieces are all printed, we will be having the installation done afterwards.
- For the 'grand opening' of the new hanging art piece, we will be holding the ceremony in the Spring Quarter when all of the printing and assembling has been done.

Thank you

:)
