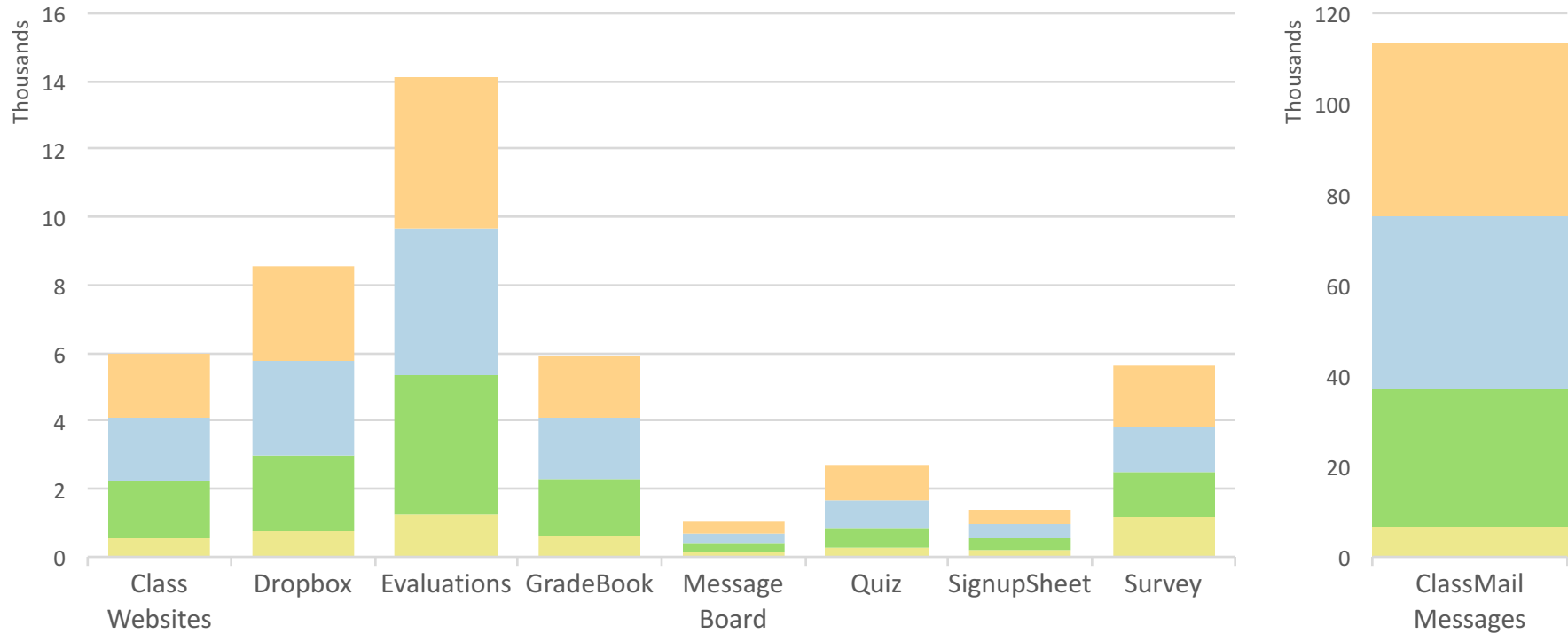


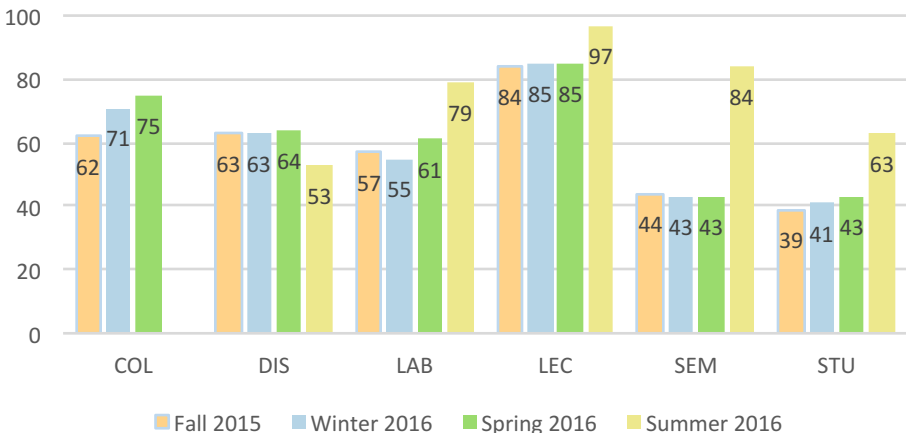
# 2015 – 2016 Academic Year EEE Usage Overview

## Tool Usage Statistics



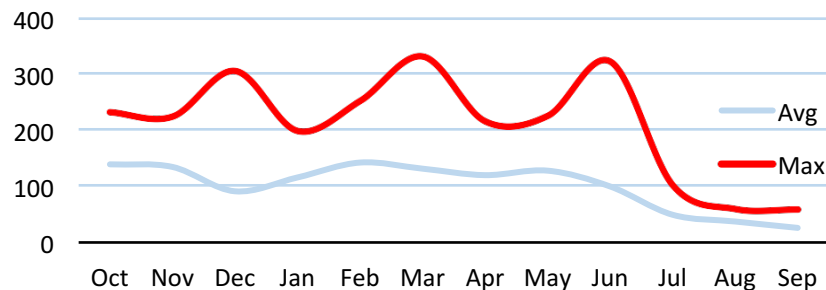
Fall	1867	2769	4403	1772	333	1029	358	1833	38399
Winter	1881	2800	4324	1812	305	834	428	1309	37701
Spring	1700	2251	4125	1704	271	604	365	1312	30462
Summer	531	724	1244	603	114	254	208	1205	6789
Total	5979	8544	14096	5891	1023	2721	1359	5659	113351

## % Classes with online evaluations



## GB transferred per day

Total transfers do not include activity on EEE Canvas, on which a majority of the summer courses were hosted

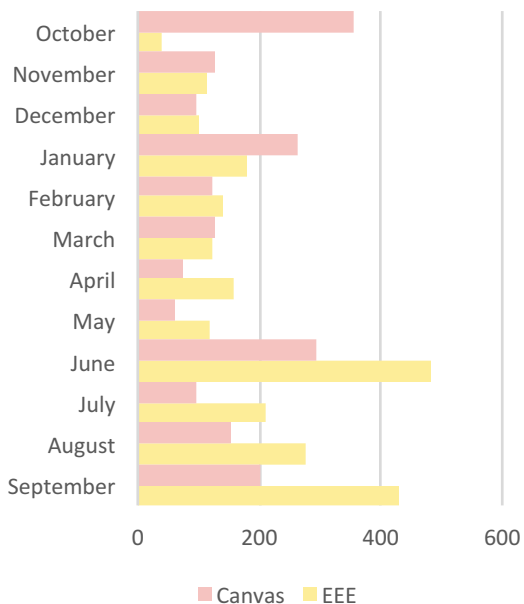


37261.76 GB – Total GB transferred    101.57 GB – Daily average

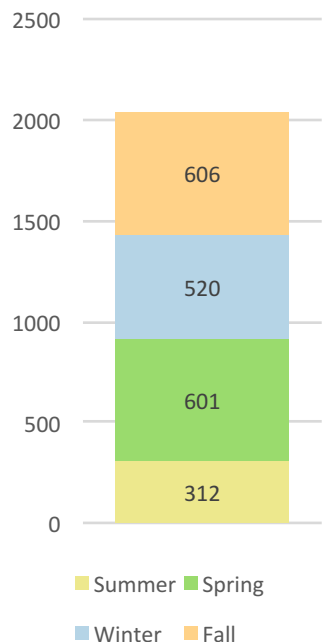
330.78 GB – Highest in one day (March 14, 2016)

## EEE & Canvas Support Volume

(Email & phone requests)

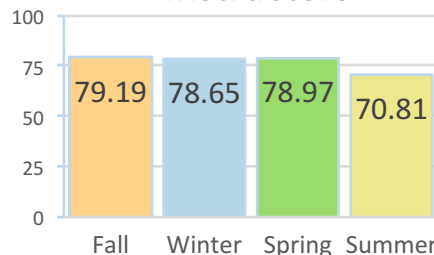


## EEE Canvas Course Spaces

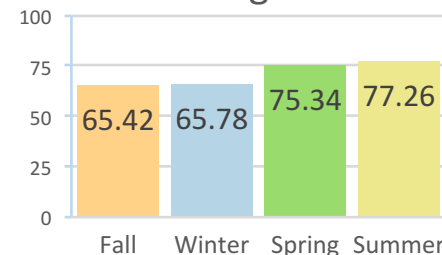


## Who accessed EEE?

### Instructors



### Undergraduate



Including staff, TAs, & grad students, total unique users who accessed EEE:



## The EEE Team



**Briandy Walden**  
Strategic Planning & Initiatives



**Kelsey Layos**  
Project & Team Management



**Ray Vadnais**  
User Experience Design



**Su Wang**  
Software Development



**Jeremy Thacker**  
Software Development



**Brian Payne**  
Software Development



**Caryn Neiswender**  
Instructional Technology Support



**Vanessa Yieh**  
Support & Quality Assurance



**Erik Kelly**  
Canvas Transition Support