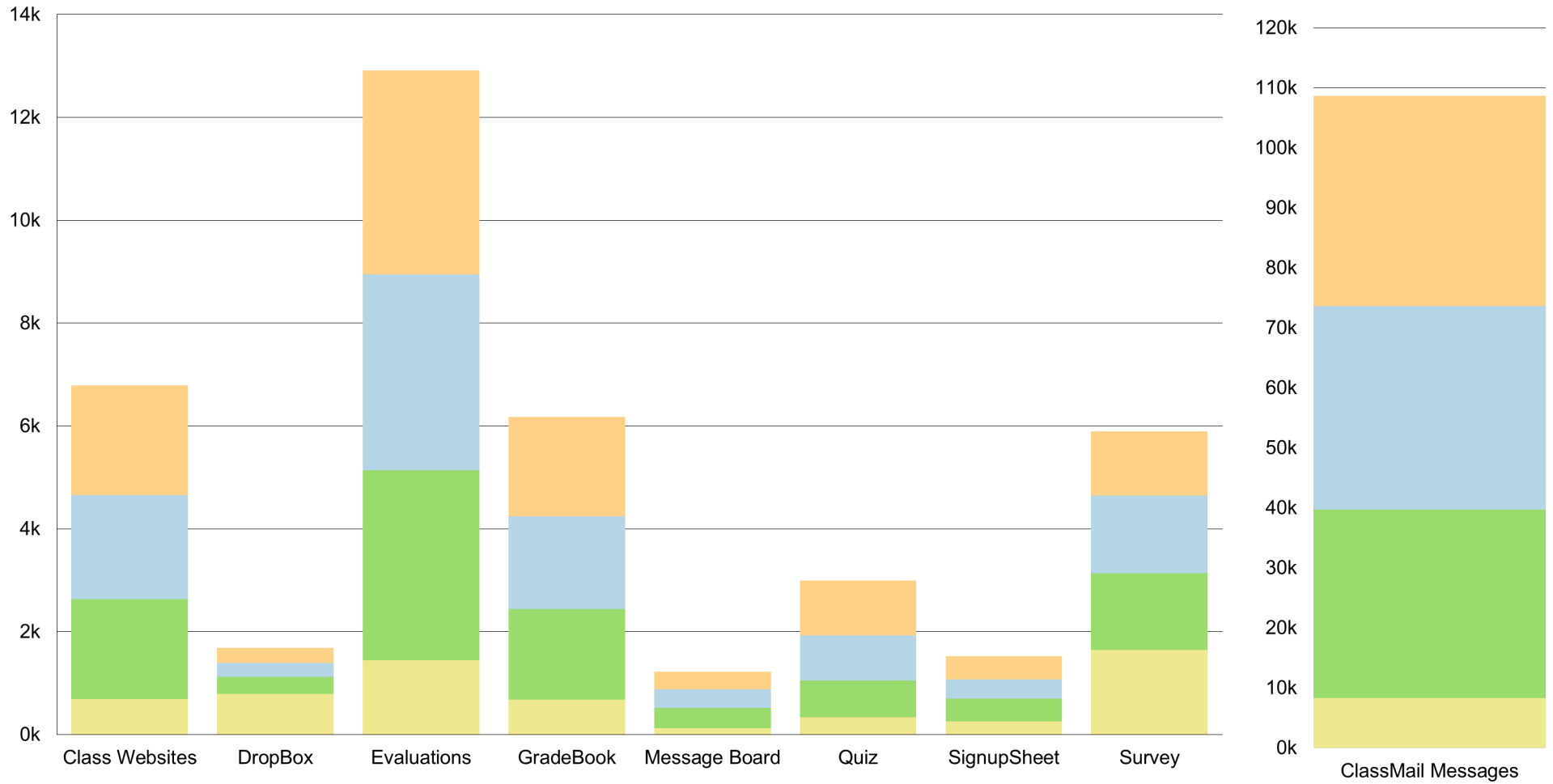


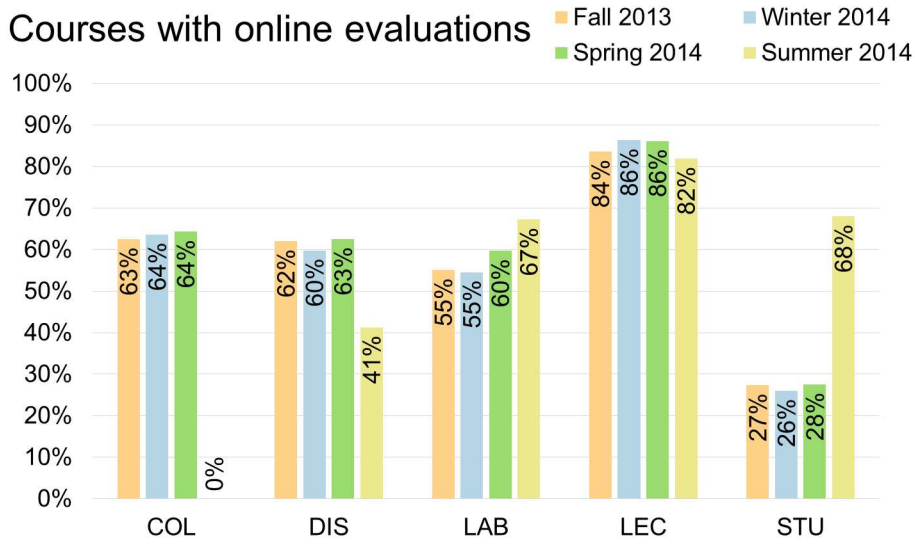
2013 - 2014 Academic Year EEE Usage Overview

Tool Usage Statistics (number of instances)

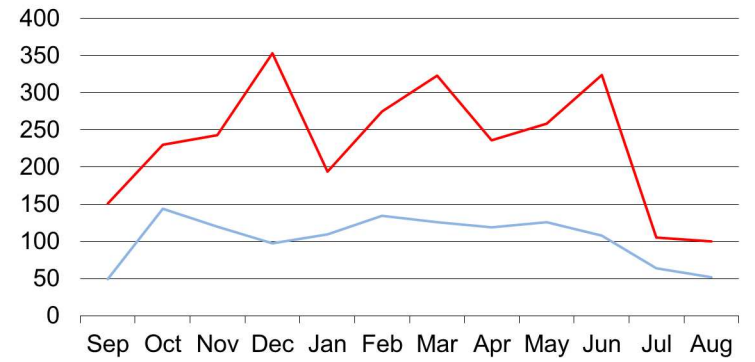


| | | | | | | | | | |
|--------|-------|-------|--------|-------|-------|-------|-------|-------|---------|
| Fall | 2,137 | 288 | 3,964 | 1,936 | 337 | 1,064 | 456 | 1,247 | 34,956 |
| Winter | 2,021 | 277 | 3,806 | 1,808 | 367 | 887 | 371 | 1,519 | 33,940 |
| Spring | 1,944 | 328 | 3,697 | 1,758 | 389 | 709 | 449 | 1,483 | 31,434 |
| Summer | 689 | 791 | 1,442 | 679 | 129 | 338 | 252 | 1,649 | 8,292 |
| Total | 6,791 | 1,684 | 12,909 | 6,181 | 1,222 | 2,993 | 1,528 | 5,898 | 108,622 |

Courses with online evaluations

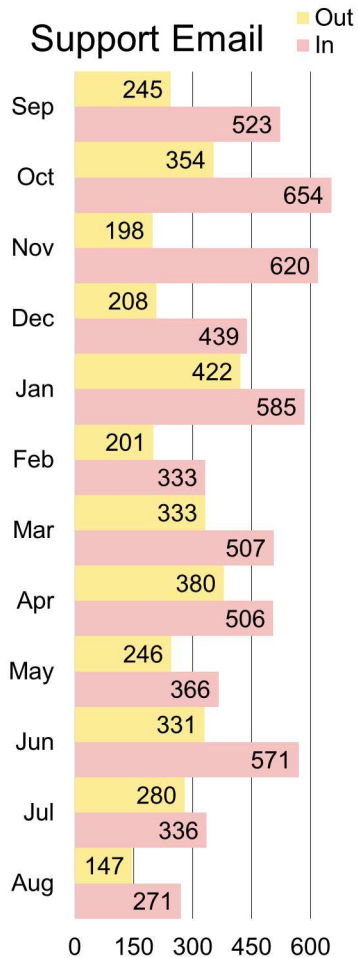


GB transferred per day

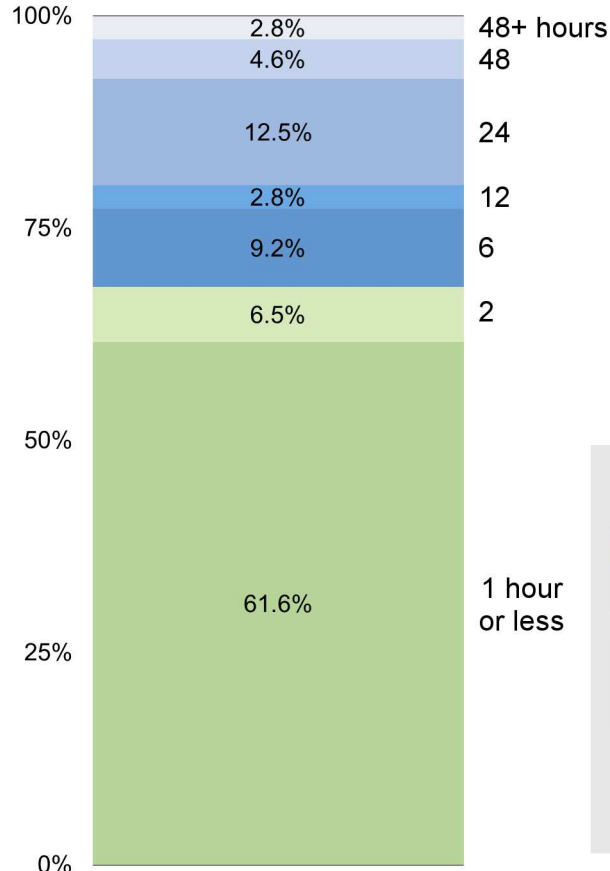


37,903 GB - total GB transferred 104 GB - daily average
353.09 GB - highest in one day (December 10, 2013)

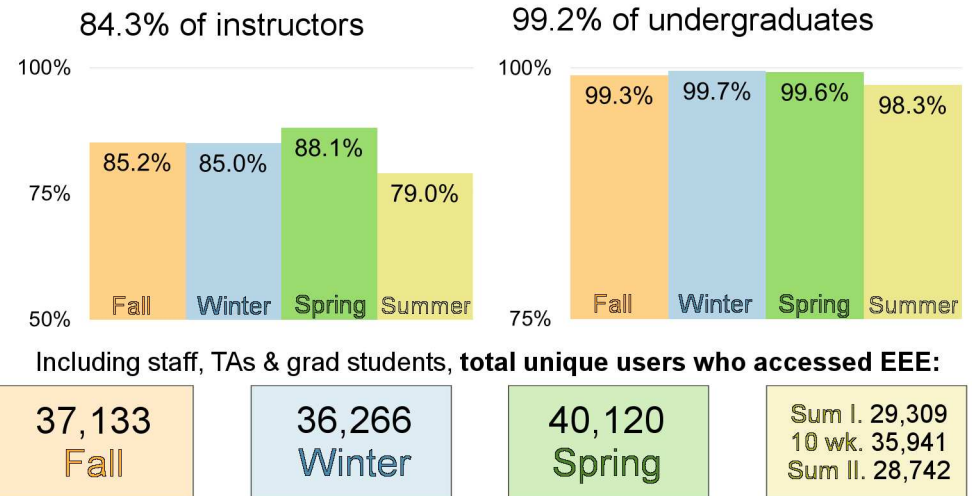
Support Email



Support Turn-around



Who accessed EEE?



The EEE Team

| | | |
|--|---|---|
|  Briandy Walden Strategic Planning & Initiatives |  Ray Vadnais User Experience Design |  Su Wang Software Development |
|  Kelsey Layos Project & Team Management |  Vanessa Yieh Support & Quality Assurance |  Brian Payne Software Development |
|  Caryn Neiswender Instructional Technology Support |  Jeremy Thacker Software Development | |