

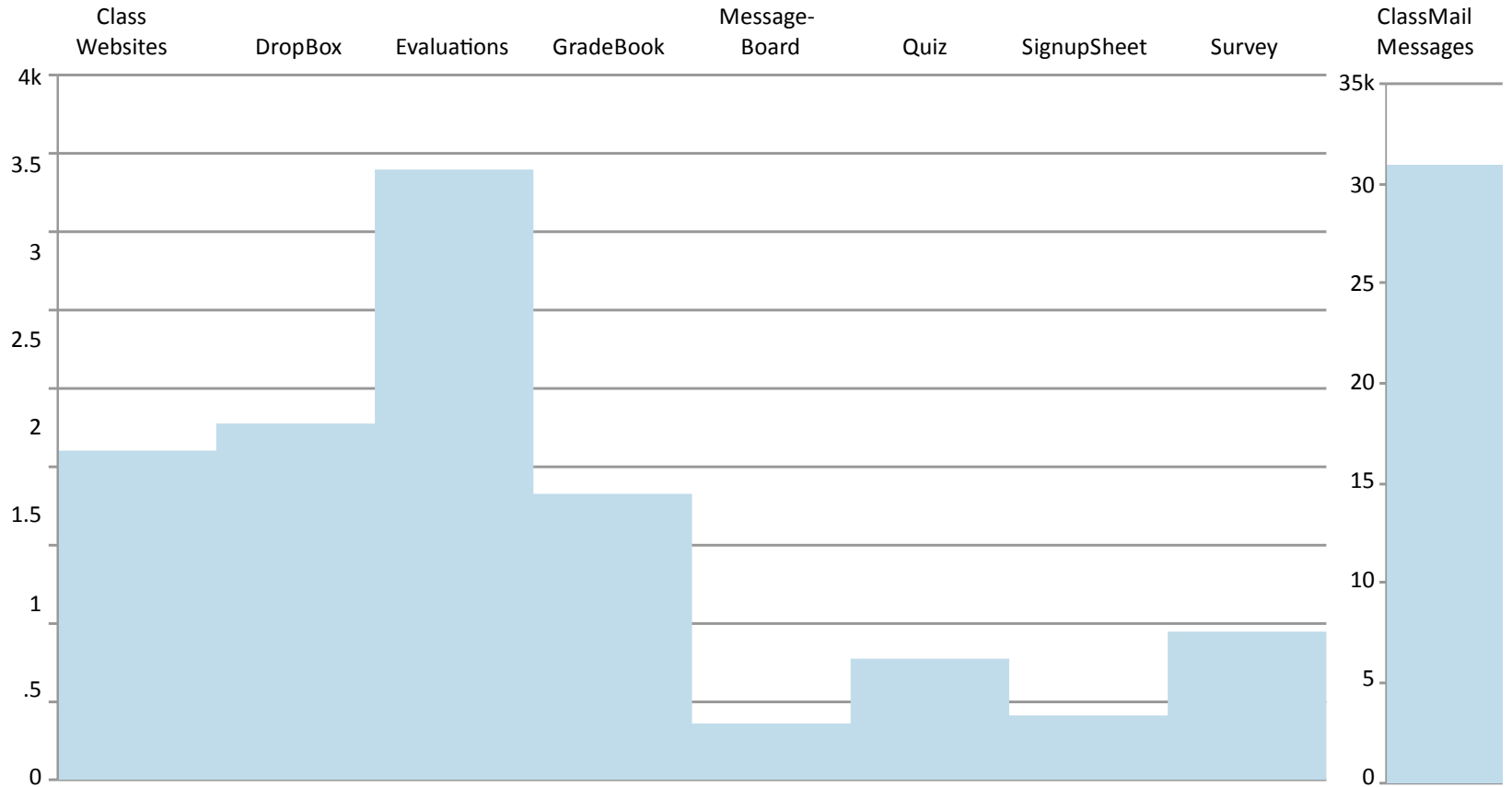
Winter 2013 EEE Usage Overview

Courses

	Winter	
	2013	2012
ACT	240	248
COL	13	9
DIS	1,643	1,474
FLD	374	376
LAB	872	730
LEC	1,406	1,339
RES	2,476	2,107
SEM	1,138	1,110
STU	265	256
TAP	104	188
TUT	2,295	2,368
Total	10,826	10,205

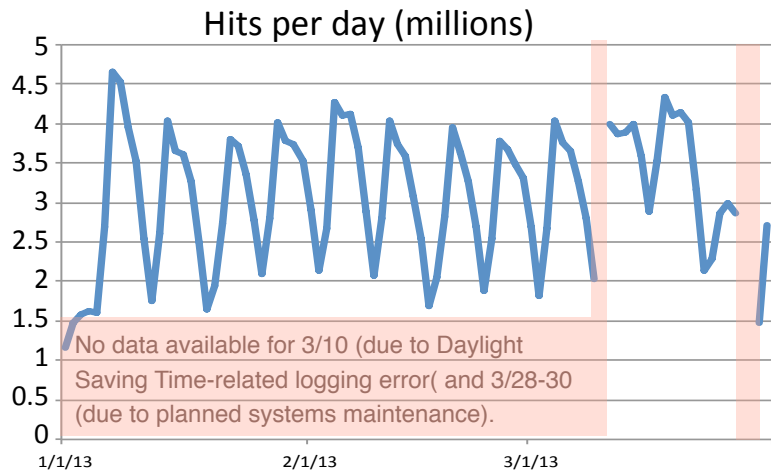
621 more courses were listed in Winter 2013 compared to Winter 2012.

Tool Usage Statistics

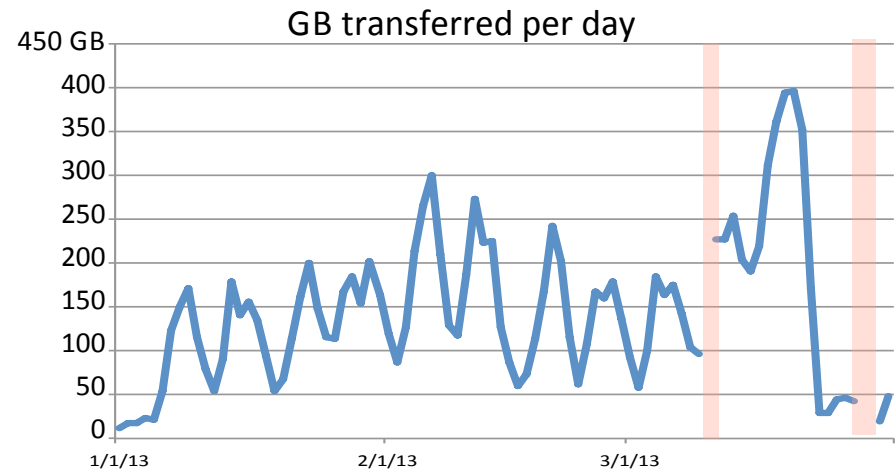


	Winter 2013	Winter 2012	Change
Class Websites	2,096	1,989	+107
DropBox	2,269	2,285	-16
Evaluations	3,893	3,687	+206
GradeBook	1,826	1,752	+74
Message-Board	360	344	+16
Quiz	765	626	+139
SignupSheet	404	363	+41
Survey	954	838	+116
Total	30,851	29,275	+1,576

Traffic overall tends to peak mid-week (Tuesday-Thursday) and drop off on the weekends.

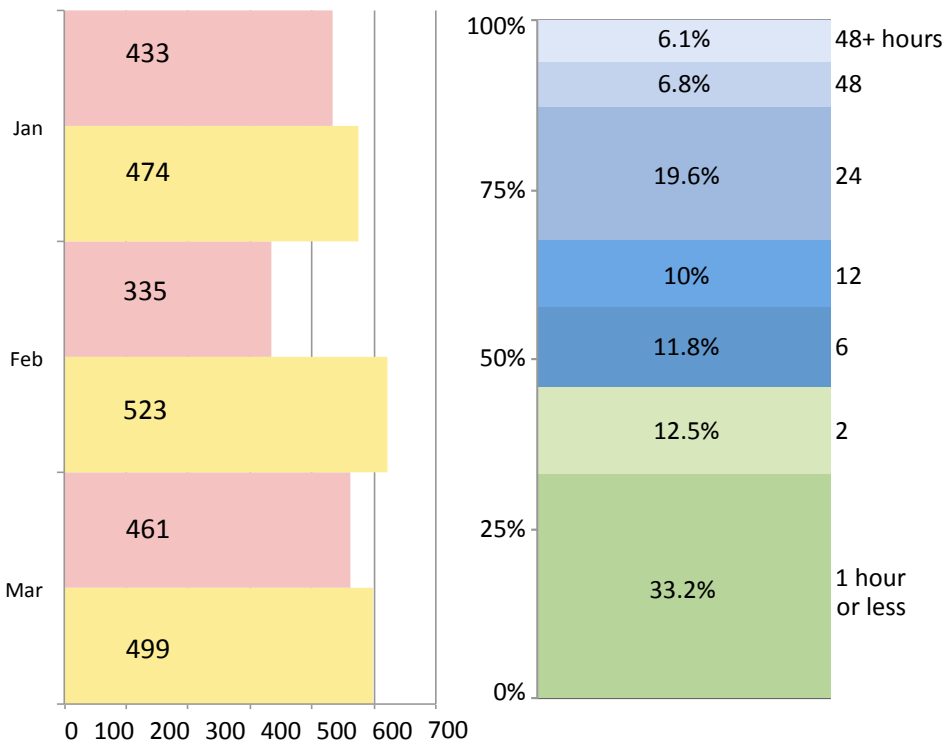


- 267,757,658 - total hits
- 2,979.808.67 - daily average
- 4,653,271 - highest in one day (Jan 7)

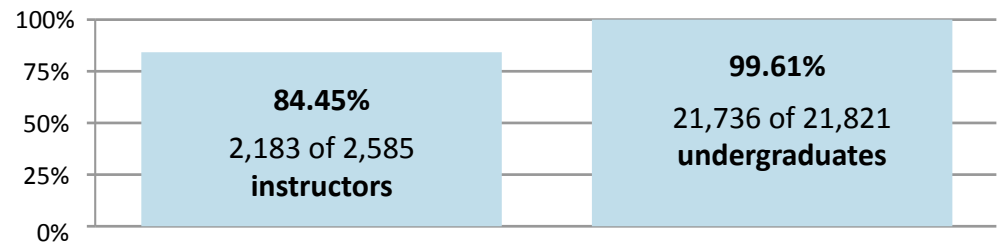


- 12,066.35 - total GB transferred
- 101.00 - daily average
- 377.85 - highest in one day (Mar 20)

Support Email In Out Support Turn-around



Login Statistics – Who used EEE?



Including staff, TAs & grad students, a total of **33,621 unique users** logged in to EEE in Winter 2013

The EEE Team

- Briandy Walden**
Project & Team Management
- Ray Vadnais**
Design & Business Analysis
- Kelsey Layos**
Operational Management & Support
- Caryn Neiswender**
Instructional Technology Support

- David Pritikin**
Quality Assurance
- Su Wang**
Programming
- Jeremy Thacker**
Programming
- Brian Payne**
Programming