

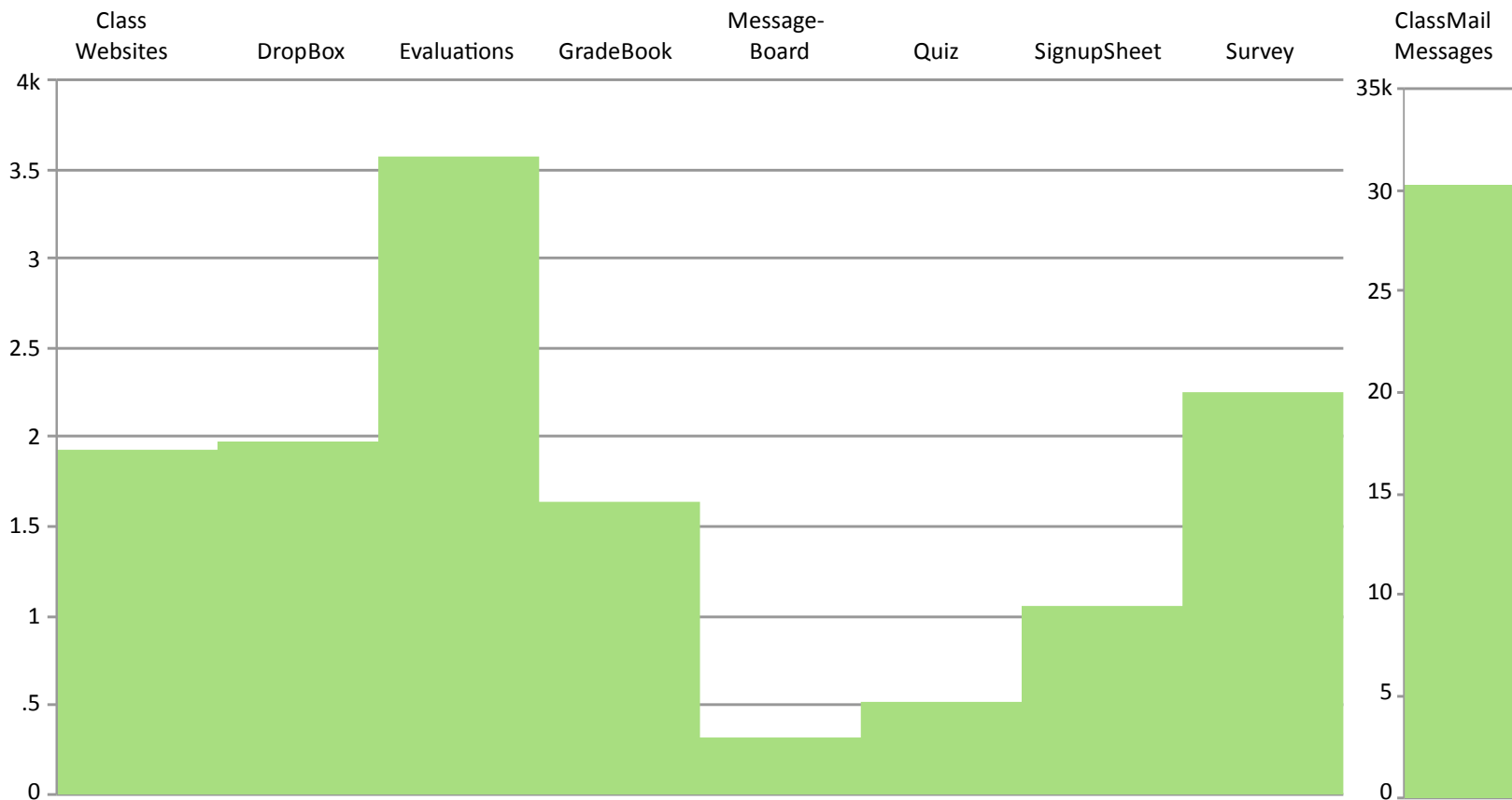
Spring 2013 EEE Usage Overview

Courses

	Spring	
	2013	2012
ACT	225	228
COL	14	13
DIS	1,434	1,374
FLD	377	390
LAB	763	658
LEC	1,376	1,312
RES	2,483	2,094
SEM	1,119	1,083
STU	264	271
TAP	108	174
TUT	2,257	2,393
Total	10,420	9,990

430 more courses were listed in Spring 2013 compared to Spring 2012.

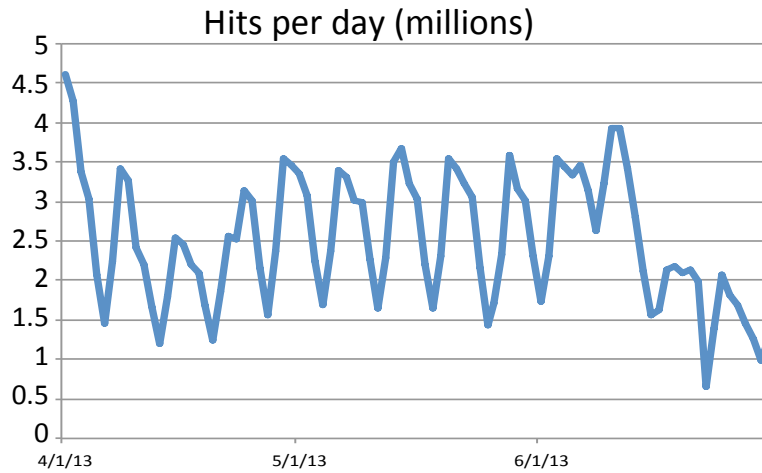
Tool Usage Statistics



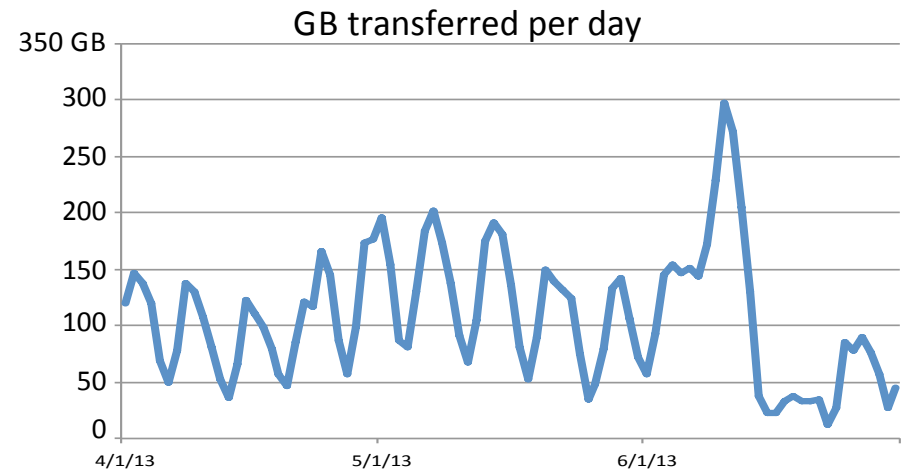
	Spring 2013	Spring 2012	Change
Class Websites	1,925	1,887	+38
DropBox	1,969	1,805	+164
Evaluations	3,578	3,594	-16
GradeBook	1,631	1,674	-43
Message-Board	321	339	-18
Quiz	518	471	+47
SignupSheet	1,059	827	+232
Survey	2,253	2,135	+118
Total	30,249	28,614	+1,635

Traffic overall tends to peak mid-week (Tues-Thurs) and drop off on weekends.

Traffic declines significantly for Summer (Spring finals ended 6/15).

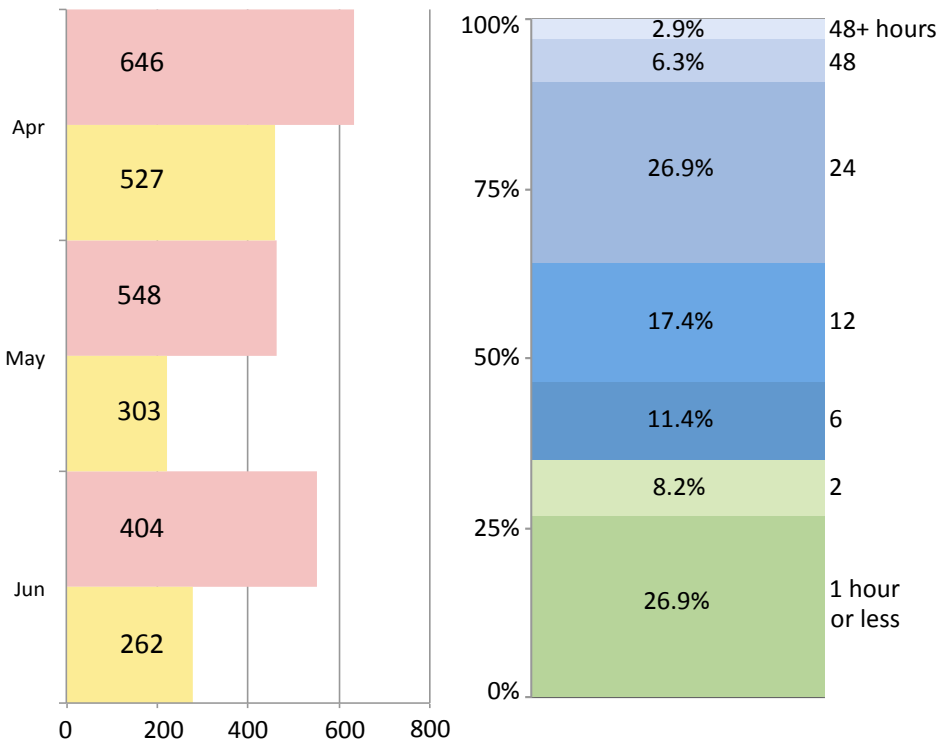


- 229,061,959 - total hits
- 2,514,950 - daily average
- 4,624,873 - highest in one day (Apr 1)

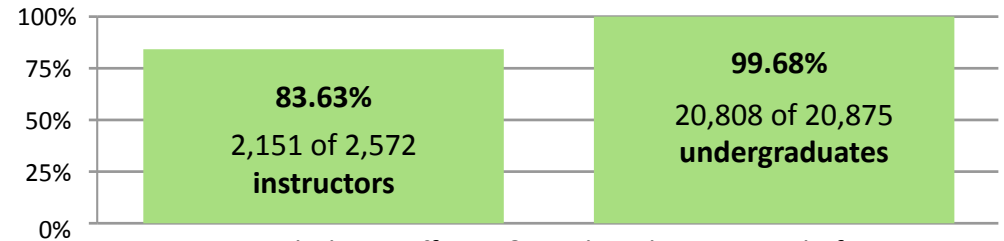


- 9,334.04 - total GB transferred
- 76.82 - daily average
- 284.15 - highest in one day (Jun 10)

Support Email ■ In ■ Out Support Turn-around



Login Statistics – Who used EEE?



Including staff, TAs & grad students, a total of **36,943 unique users logged in to EEE in Spring 2013**

The EEE Team

Briandy Walden
Project & Team Management

Su Wang
Programming

Dennis Vidovich
Programming

Kelsey Layos
Project & Team Management

Jeremy Thacker
Programming

Caryn Neiswender
Instructional Technology Support

Ray Vadnais
Design & Business Analysis

Brian Payne
Programming

David Pritikin
Quality Assurance