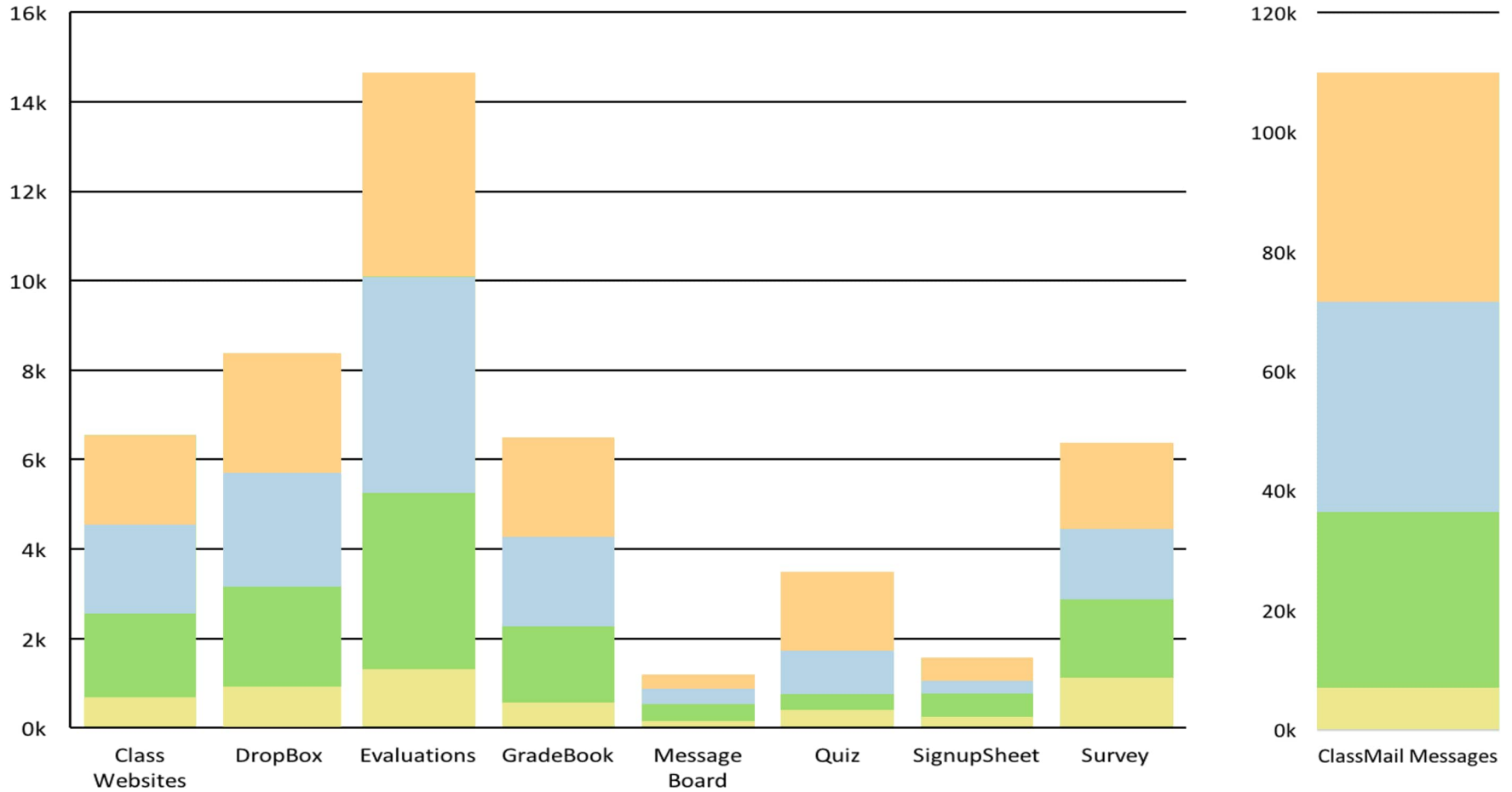


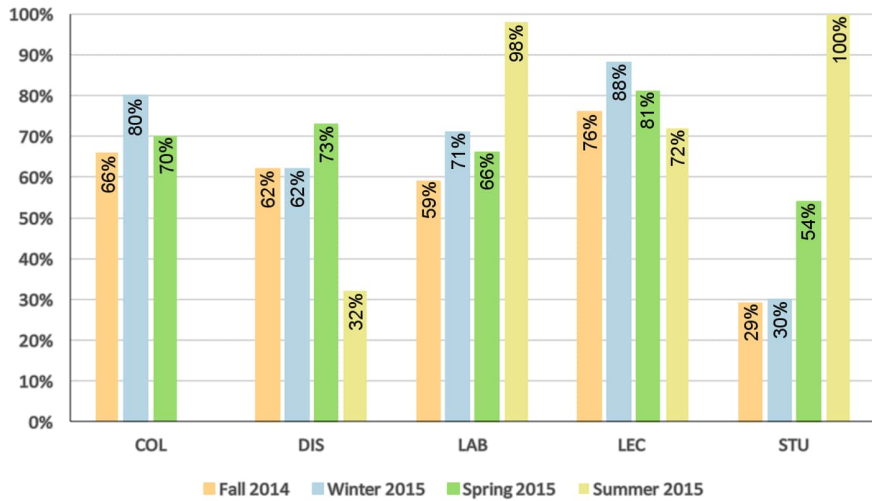
2014 - 2015 Academic Year EEE Usage Overview

Tool Usage Statistics

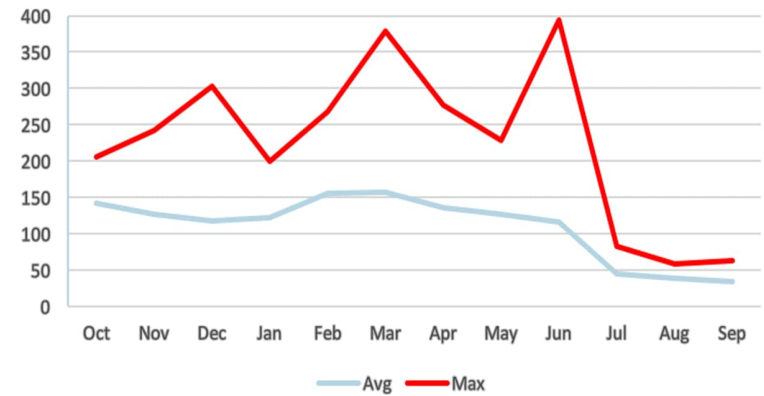


Fall	2,139	2,628	4,588	2,127	331	1,284	490	1,655	36,853
Winter	2,054	2,612	4,528	1,963	362	1,077	409	1,653	34,917
Spring	1,870	2,445	4,296	1,812	378	281	452	1,785	31,995
Summer	494	697	1,225	562	103	330	223	1,285	6,822
Total	6,557	8,382	14,637	6,464	1,174	3,472	1,574	6,378	109,867

Courses with online evaluations

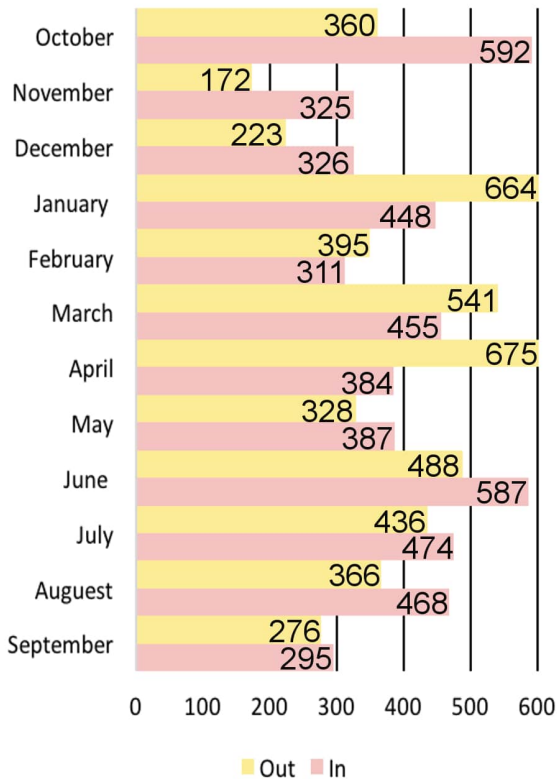


GB transferred per day

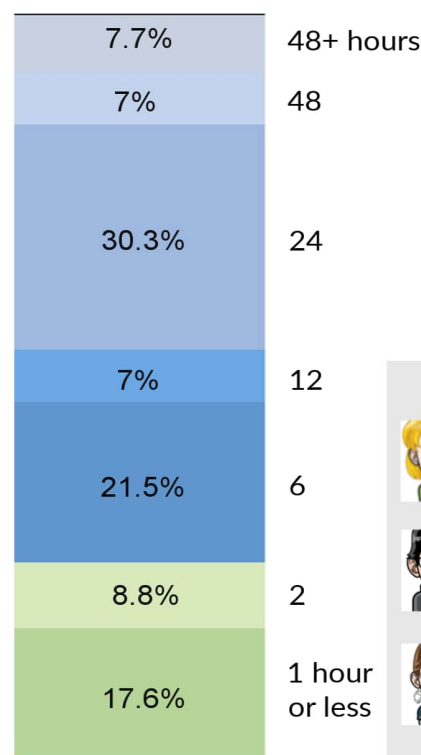


39,458.47 GB - Total GB transferred **112.09 GB** - Daily average
393.97 GB - Highest in one day (June 10, 2015)

Support email

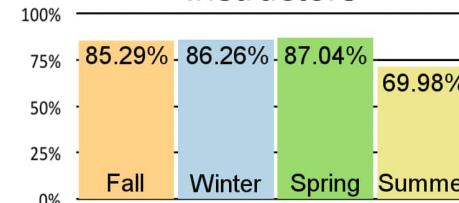


Support turn-around

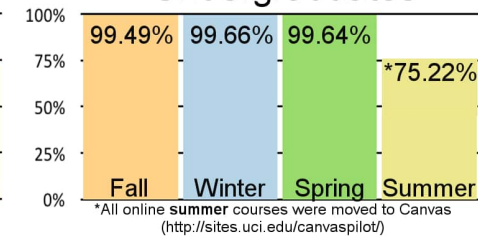


Who accessed EEE?

Instructors











Undergraduates



Including staff, TAs & grad students, **total unique users who accessed EEE:**



The EEE Team

 Briandy Walden Strategic Planning & Initiatives	 Kelsey Layos Project & Team Management	 Ray Vadnais User Experience Design
 Su Wang Software Development	 Jeremy Thacker Software Development	 Brian Payne Software Development
 Caryn Neiswender Instructional Technology Support	 Vanessa Yieh Support & Quality Assurance	