

Medical
Education
Simulation
Center

2012-

2013

**Report to
the Dean**

Highlights

Conducted 612 sessions/educational activities

Trained 4,612 participants

69,180 Student Contact Minutes

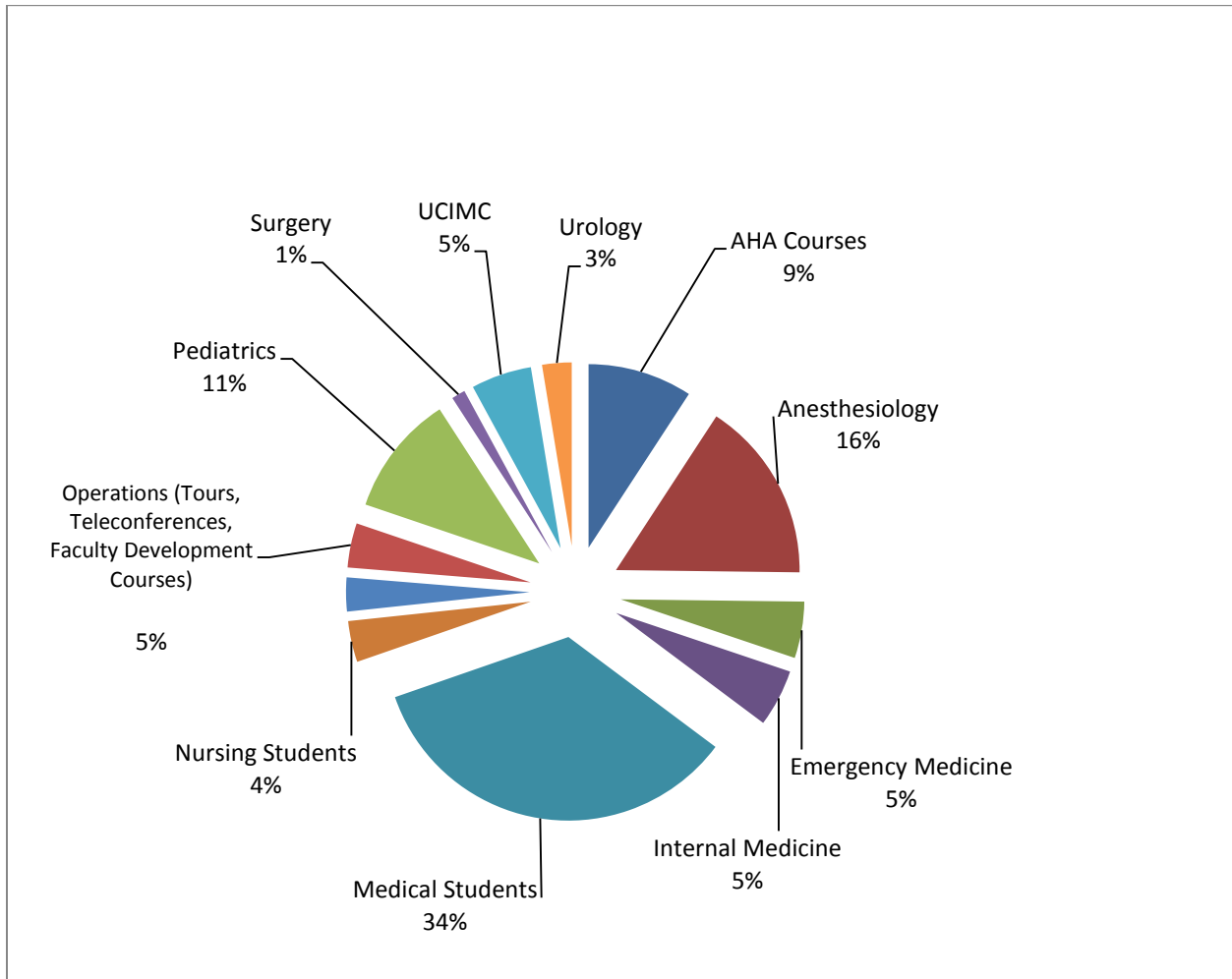
- Received accreditation by Simulation Endorsed Network to provide Maintenance of Certification training
- Became part of the Surgical Education Center's Accredited Education Institute from the American College of Surgeons



- Developed and trained inter-professional simulation instructor course to Australians
- Developed and implemented Simulation Operations and Programming courses for participants in Australia
- Assisted in the development and implementation of a weeklong simulation and ultrasound boot camp for medical students at the University of New England
- Received CME accreditation for 3 courses
- Hosted two preceptors from University of New England for a two week period
- Implemented simulation/standardized patient OSCE's for MS3
- Dr. Suzanne Strom, Associate Director of the center, and Ceci Canales, Director of Operations for the center, taught simulation with other instructors from around the country at the annual meeting of the American Society of Anesthesiologists in Washington, DC.
- Awarded as a course site by National Association of Emergency Medical Technicians



Simulation Utilization by Group/Department



Simulation Hours By Group/Dept.

	Hours
Medical Students	994.16
Anesthesia	467.84
Pediatrics	321.64
AHA Courses	263.16
Emergency Medicine	146.20
Internal Medicine	146.20
Operations	146.20
UCIMC	146.20
Nursing	116.96
Surgery	29.24

Note: All figures are approximate based on utilization percentage

Medical Student Simulation Curriculum 2012-2013

MS 1

Title	Hours per session	No of sessions#	Total hours	Per student hours
Vitals Signs Training and practice	3	8	24	3
Vital Signs Testing	1	6	6	0.2
BLS	4*	10	40	2*
Cardiovascular Physiology	2	8	16	2
Respiratory Physiology	2	8	16	2
Renal Acid/Based Physiology	2	8	16	2
Total MS 1			118 hours	11 hours 12 min

*not inclusive of screen based time; # Small group sessions typically include 4-15 students per group

MS 2

Title	Hours per session	No of sessions	Total hours	Per student hours
Cardiovascular Pharmacology	2	8	16	2
Inhaled and IV Anesthetics Pharmacology	2	8	16	2
Sedatives and Narcotics Pharmacology	2	8	16	2
Peds Day	2	1	2	2
Total MS2			50 hours	8 hours

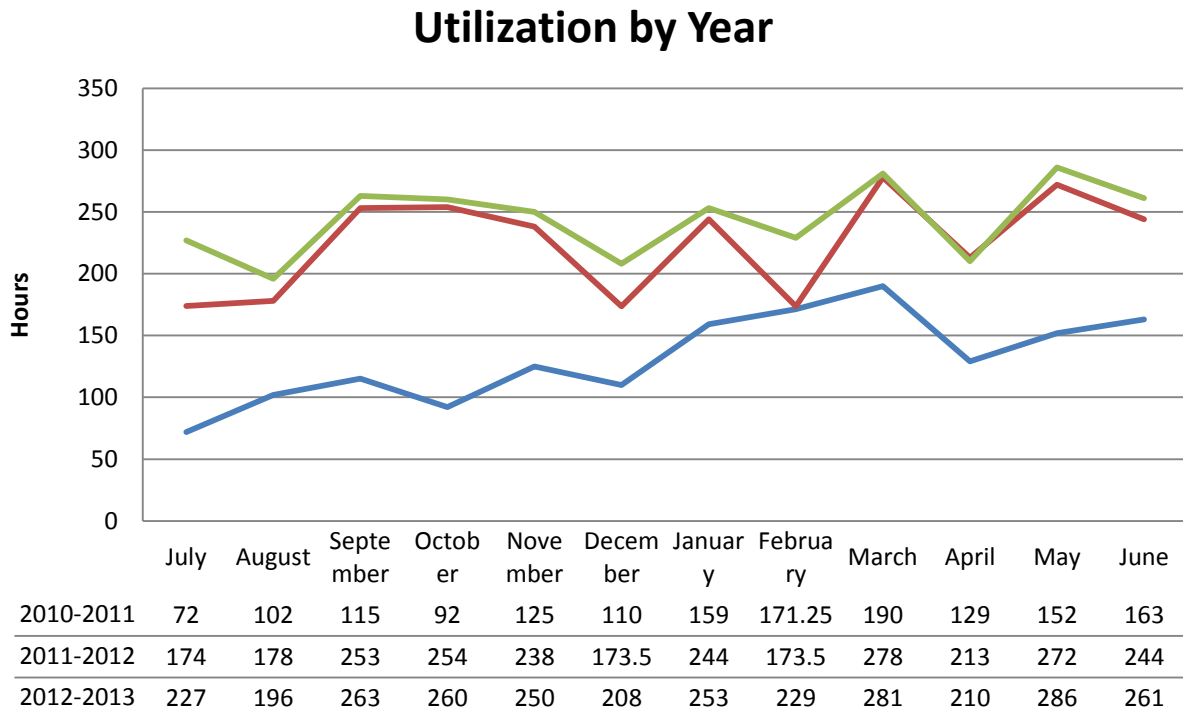
MS 3

Title	Hours per session	No of sessions	Total hours	Per student hours
BLS	4*	10	40	2*
CF3	2	8	16	2
Family Medicine Clerkship	2	12	24	2
OB Clerkship	6	12	72	6
Pediatrics OSCE	0.5	12	6	0.5
Surgery Clerkship	3	12	36	3
Surgery OSCE	3	12	36	0.5
Geriatrics	3	12	36	3
Total MS 3			266 hours	19 hours

MS 4

Title	Hours per session	No of sessions	Total hours	Per student hours
Anesthesia Sub-I	4	12	48	4
Multi-ICU Rotation	4	12	48	4
ACLS	4	3	12	12
CF4	4	3	12	4
Total MS 4			120 hours	24 hours

Total Utilization by Year



There was a big increase in utilization from 2010-2011 (year 1) mainly due to official opening of simulation center and beginnings of new curriculum and implementation of curriculum to end users.

Overall: Yearly net increase in utilization

Key events that effect utilization across the spectrum:

December: Center is closed from Christmas to New Years per UC Irvine policy ↓ Utilization

March: Clinical Foundations 4 ↑ Utilization

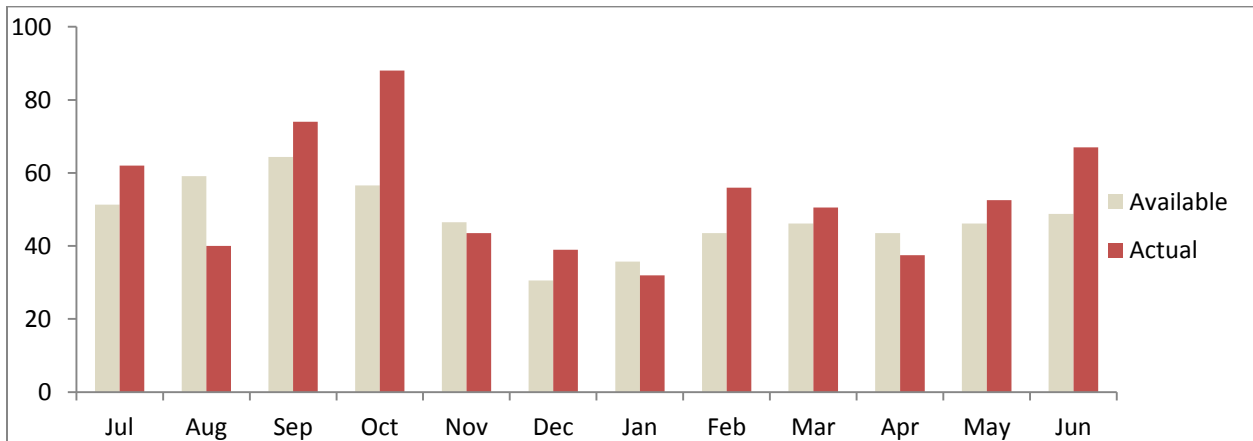
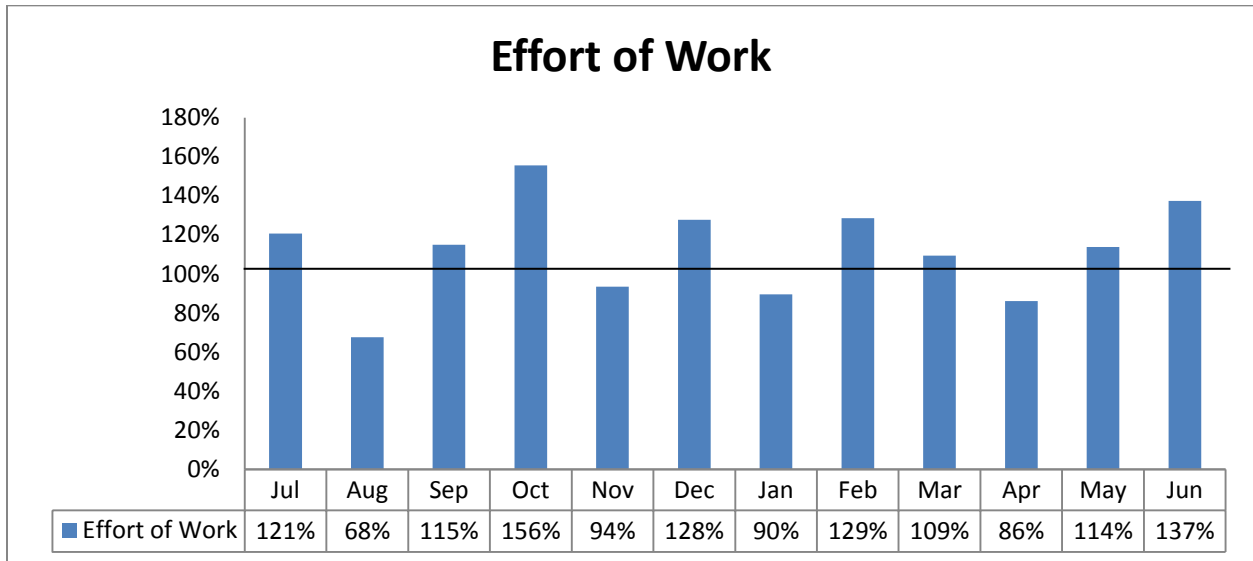
April: Annual (2 week) maintenance schedule ↓ Utilization

May: Clinical Foundations 3 ↑ Utilization

Percentage of Effort

	Jul	Aug	Sep	Oct	Nov	Dec	Jan	Feb	Mar	Apr	May	Jun
Available	51.35	59.15	64.35	56.55	46.5	30.55	35.75	43.55	46.15	43.55	46.15	48.75
Actual	62	40	74	88	43.5	39	32	56	50.5	37.5	52.5	67
Effort of Work	121%	68%	115%	156%	94%	128%	90%	129%	109%	86%	114%	137%

Average Percentage of Effort = 112%



Factors in calculation:

Available days, number of simulation specialists, number of holidays/down time and vacation days

Factors not included:

Time that Directors spent facilitating or assisting simulation specialists

Income AY 2012-2013

Revenue (est.)



Redacted

Note – Revenue does NOT include UNE revenue. The Simulation Center has no visibility on SOM accounts receivable

Accounts Receivable (Outstanding as of 6/13/2013)



Redacted

Note – This amount is due to upcoming events in June 2013 that we have invoiced for and not yet have received monies/recharge

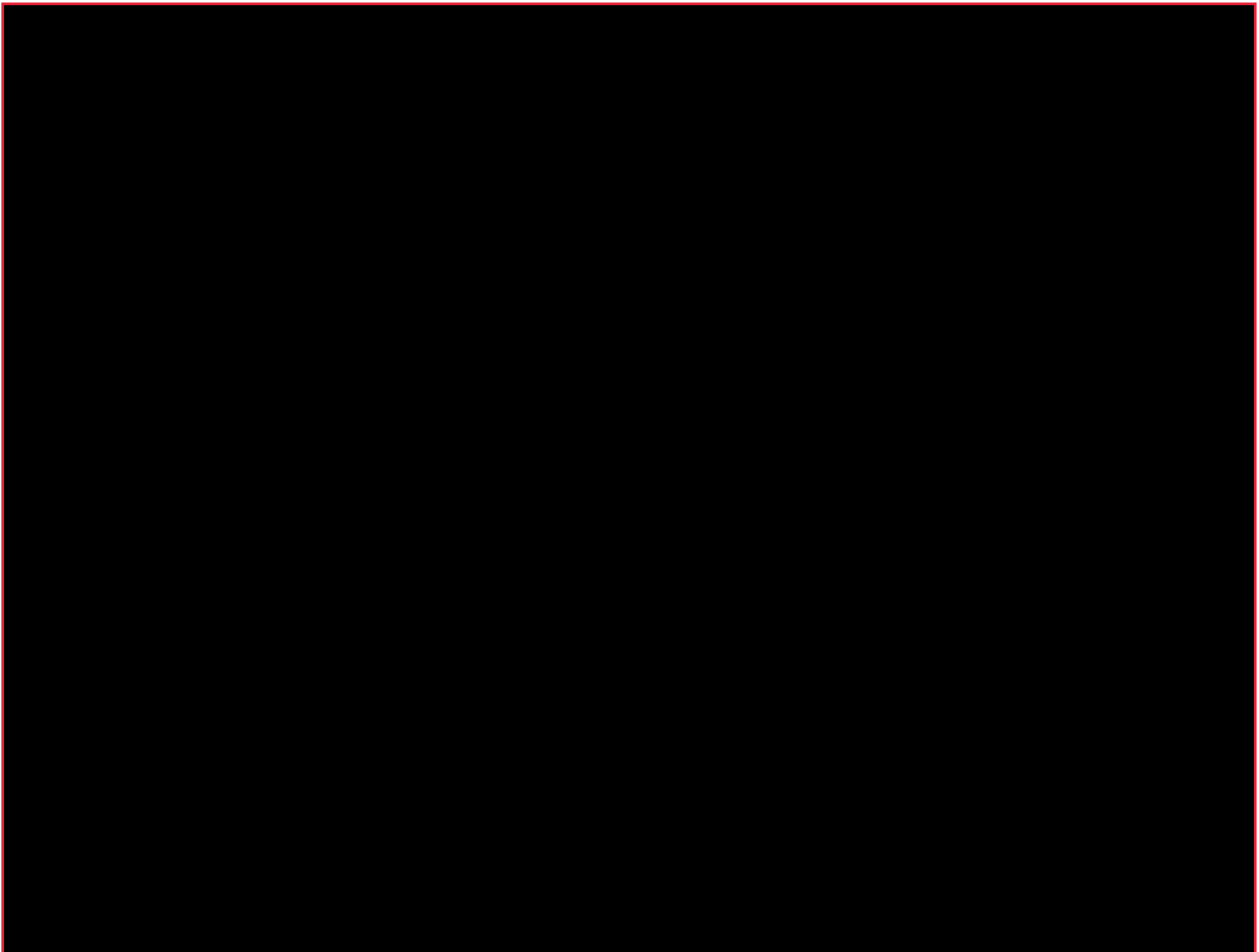
Projected Revenue AY 2013-2014

Revenue (est.)



Redacted

Estimated Increase in revenue of \$40,500 for AY 2013-2014



Redacted

Projected Increased/added Non-Revenue Based Course 2013-2014

MS 1 Biochemistry

Course being created now – Live October 2013

MS 1 Neuroscience

Course being created now – Live April 2014

MS 2 – Microbiology

Course being created now – Live September 2013

Pediatric OSCE (Simulation Component)

Currently piloting – 2013-2014

“Surviving Sepsis” Internal Medicine Resident Simulation

Currently Piloting

Projected Revenue-based Courses 2013-2014

Increase Maintenance of Certification in Anesthesia (MOCA)

Highly dependent on manning

Dr. Strom would like to do 4-8 courses

Generate \$10k per course

Simulation Instructor Course

Anticipate 4 per year

Marketing needed to generate revenue

Pre-hospital Trauma Life Support (capability – dialogue with OCFA for projected)

Awarded Course Site

Capability to do Provider course, instructor Course, and/or refresher course

Generate estimated \$3k for first year with 1 instructor

Trauma First Responder Course (capability – dialogue with OCFA for projected)

Awarded Course Site

Capability to do Provider course, instructor Course, and/or refresher course

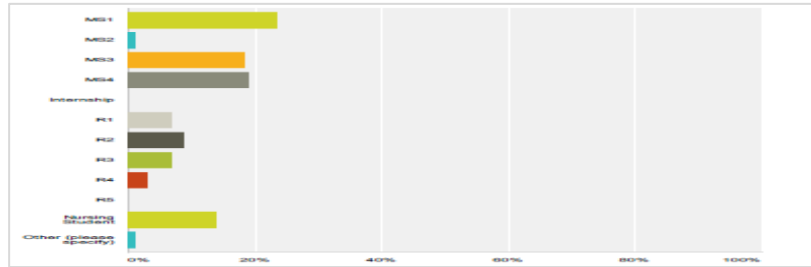
Generate estimated \$3k for first year with 1 instructor

Strategic Planning Survey Results

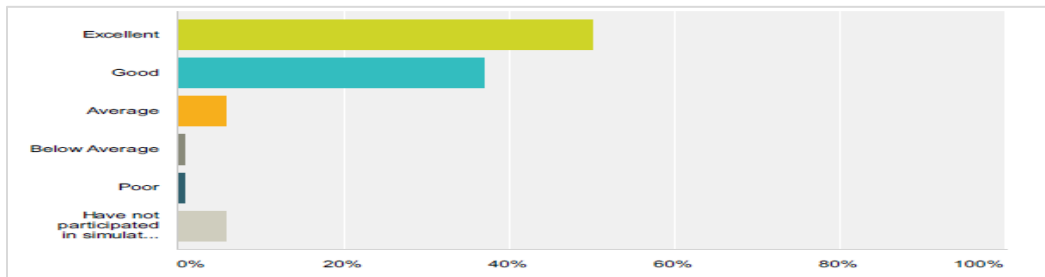
Selected Results

138 Respondents

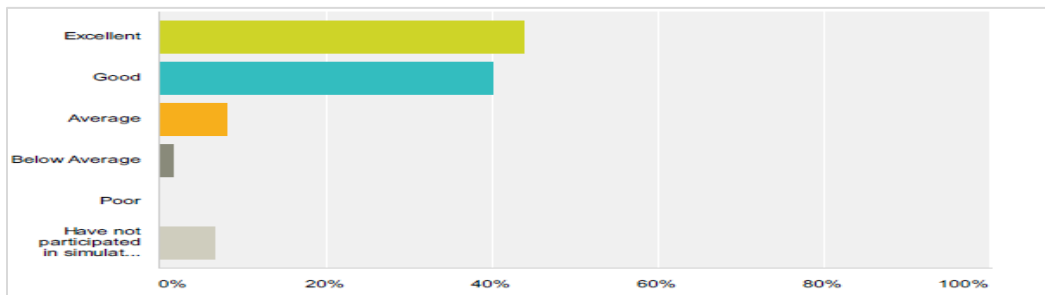
Medical Students	60.87%
Residents	24.64%
Nursing Students	13.77%
Other	0.72%



86.96% of users rate the educational value of simulation education as excellent or good.



83.95% of users rate the quality of the simulation education at the simulation center as excellent or good.



85.4% of users rate the service provided by the simulation center as excellent or good.

